



FABTECH SUPPLY

THE ENCLOSURE HARDWARE SUPPLIER



# Our Products

## JIC Style Enclosures

JIC Style Cover Clamp Bracket . . . . .	5
JIC Style Cover Clamp . . . . .	6
JIC Style Cover Clamp Assembly . . . . .	6
JIC Cover Clamp Screws . . . . .	7
JIC Cover Clamp Screws—Combo Head . . . . .	7
JIC Panel Mounting Weldnut . . . . .	8
JIC Wireway Hinge . . . . .	8
JIC Style Mounting Feet . . . . .	9
JIC Quick Release Clamp . . . . .	10
JIC Padlock Cover Staple . . . . .	11
JIC Padlock Box Staple . . . . .	11
JIC Padlock Staple Kit . . . . .	12
JIC Cover Chain . . . . .	12
Blind Riveting Nuts . . . . .	12

## Wall-Mount Enclosures

Door Clamp Assemblies Without Bracket: Types 4, 12 and PH . . . . .	14
Door Clamp Assemblies With Bracket: Types 4, 12 and PH . . . . .	16
Door Clamps: Types 4, 12 and PH . . . . .	18
Door Clamp Hardware — Bracket: Types 4, 12 and PH . . . . .	19
Door Clamp Hardware — Screw: Types 4, 12 and PH . . . . .	20
Door Clamp Hardware — Spring: Types 4, 12 and PH . . . . .	20
Door Clamp Hardware — Washer: Types 4, 12 and PH . . . . .	20
Padlock Hasp and Staple Set . . . . .	21
Padlock Hasp . . . . .	21
Padlock Staple . . . . .	21
Nema Mounting Foot . . . . .	22
Euro Mounting Foot . . . . .	23
Panel Mounting Collar Stud . . . . .	23
Fast Operating Door Clamps: Lever and Clamp Assembly . . . . .	24
Adjustable Door Stop Kit . . . . .	25
90 Degree Door Stop Kit . . . . .	26

## Floor-Mount Enclosures

Heavy Duty Door Clamp . . . . .	28
Fast Operating Heavy Duty Door Clamp . . . . .	30
Door Latch Kits . . . . .	32
Door Rod Assemblies for Three Point Latch Kits . . . . .	33
Adjustable Door Rod Guides for Three Point Latch Kits . . . . .	34

# Our Products

Fixed Door Rod Guides for Three Point Latch Kits. . . . .	35
Door Handles: Vault Type Kit . . . . .	35
Door Handles: Top Padlockable Kit. . . . .	36
Door Handles: Bottom Padlockable Kit . . . . .	37
Cam Kit for Padlockable Handle Kits: Single Point Latch System . . . . .	38
Cam Kit for Padlockable Handle Kits: Three Point Latch System. . . . .	38
Large Cam Kits for Three Point Padlockable Latch . . . . .	39
FS Type Panel Mounting Hardware: Bracket Assembly. . . . .	40
FS Type Panel Mounting Hardware Kits . . . . .	41
Side Mounted Panel Hardware Kits. . . . .	41
FSDD Type Panel Mounting Hardware Kits . . . . .	42
Center Support of FSDD Type Panel Hardware Kits . . . . .	43
Console Panel Mounting Hardware Kits . . . . .	44

## Hinges

Definition of Hinges . . . . .	46
Preformed Hinge — NEMA Style . . . . .	47
Specialty Hinges . . . . .	48
JIC Style Pre-Cut Hinges . . . . .	49
Continuous Hinges: HC-40 Series . . . . .	50
Continuous Hinges: HC-50 Series . . . . .	51
Continuous Hinges: HC-60 Series . . . . .	52
Continuous Hinges: HC-61 Series . . . . .	53
Continuous Hinges: HC-65 Series . . . . .	54
Continuous Hinges: HC-74 Series . . . . .	55

## Miscellaneous Hardware

Inner Panels (Deadfronts) . . . . .	57
Oil Tight Hole Seals. . . . .	58
Grounding Kits: NEMA. . . . .	59
Grounding Kits: JIC . . . . .	60
Wing Turn Draw Latch . . . . .	60
Clip Nuts for Relay Racks. . . . .	62
Compression Spring Catch . . . . .	62
Shoulder Eye Bolts . . . . .	63
Captive Screws . . . . .	64
Data Pockets . . . . .	65
Gasket for Type 4, 12 and JIC Enclosures . . . . .	66
Gasket for Double Door Transition . . . . .	66



## JIC STYLE ENCLOSURES



JIC Style Cover Clamp Bracket

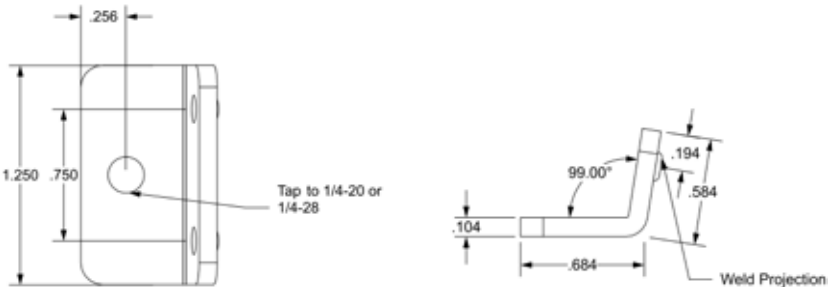


Application & Design

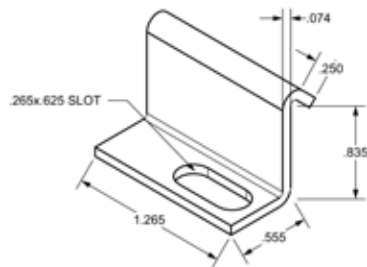
JIC Style Clamp Bracket is intended to be welded to the enclosure to accept the Cover Clamp. The Clamp Bracket is available with 1/4-20 and 1/4-28 threads, except 316 Stainless Steel and Aluminum have 1/4-28 threads only. Weld projections are optional. Screws sold separately.

PRODUCT NO.	THREAD	MATERIAL	FINISH	NOTES
JH-20040	1/4-28	STEEL	UNPLATED	WELD PROJECTION
JH-20042	1/4-28	STEEL	UNPLATED	
JH-20060	1/4-28	304 STAINLESS STEEL	BRIGHT	WELD PROJECTION
JH-20062	1/4-28	304 STAINLESS STEEL	BRIGHT	
JH-20070	1/4-28	316 STAINLESS STEEL	BRIGHT	
JH-20080	1/4-28	ALUMINUM	MILL/BRUSH	
JH-20041	1/4-20	STEEL	UNPLATED	WELD PROJECTION
JH-20043	1/4-20	STEEL	UNPLATED	
JH-20061	1/4-20	304 STAINLESS STEEL	BRIGHT	WELD PROJECTION
JH-20063	1/4-20	304 STAINLESS STEEL	BRIGHT	

JIC STYLE COVER CLAMP BRACKET



JIC STYLE COVER CLAMP



## JIC Style Cover Clamp



### Application & Design

JIC Style Cover Clamp is attached with a screw to the tapped clamp bracket to seal the cover to the box. When attached, the clamp engages the formed lip of the enclosure cover. When the screw is tightened, the clamp secures the cover to the box. The clamp has an oblong slot which permits the clamp to swing out of the way when the screw is loosened. Screws sold separately.

PRODUCT NO.	MATERIAL	FINISH
JH-20010	STEEL	YELLOW PLATE
JH-20011	STEEL	CLEAR PLATE
JH-20020	304 STAINLESS STEEL	BRIGHT
JH-20030	316 STAINLESS STEEL	BRIGHT

## JIC Style Cover Clamp Assembly

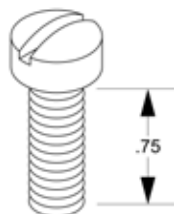


### Application & Design

The JIC Style Clamp Assembly is made from the combination of three parts: Cover Clamp, Clamp Bracket and Combo Screw. These parts work together to fully secure the enclosure cover. All three parts are also sold separately.

PRODUCT NO.	THREAD	MATERIAL	FINISH	NOTES
JH-40010	1/4-28	STEEL	YELLOW PLATE	
JH-40020	1/4-28	STEEL	CLEAR PLATE	
JH-40030	1/4-28	304 STAINLESS STEEL	BRIGHT	
JH-40032	1/4-28	304 STAINLESS STEEL	BRIGHT	WELD PROJECTION
JH-40034	1/4-28	304 STAINLESS STEEL	BRIGHT	WELD PROJECTION
JH-40040	1/4-28	316 STAINLESS STEEL	BRIGHT	
JH-40050	1/4-28	ALUMINUM	MILL/BRUSH	SCREW AND COVER CLAMP ARE STAINLESS STEEL
JH-40088	1/4-28	STEEL	YELLOW PLATE	WELD PROJECTION
JH-40011	1/4-20	STEEL	YELLOW PLATE	
JH-40021	1/4-20	STEEL	CLEAR PLATE	
JH-40031	1/4-20	304 STAINLESS STEEL	BRIGHT	
JH-40033	1/4-20	304 STAINLESS STEEL	BRIGHT	WELD PROJECTION

## JIC Cover Clamp Screws

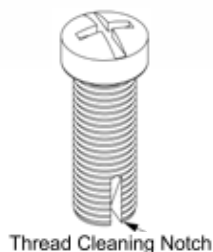


### Application & Design

Used to secure the JIC cover clamp to the box. The fillister head design provides sufficient clearance between the clamp and the screw head to allow the clamp to rotate for easy access to the interior of the box.

PRODUCT NO.	THREAD	HEAD	MATERIAL	FINISH
JH-20090	1/4-28	SLOT	316 STAINLESS STEEL	BRIGHT
JH-20093	1/4-20	SLOT	18-8 (302) STAINLESS STEEL	BRIGHT
JH-20096	1/4-20	SLOT	STEEL	YELLOW PLATE
JH-20098	1/4-20	SLOT	STEEL	CLEAR PLATE

## JIC Cover Clamp Screws—Combo Head



### Application & Design

Used to secure the JIC cover clamp to the box. The Combo Head design provides sufficient clearance between the clamp and the screw head to allow the clamp to rotate for easy access to the interior of the box. The Combo Head can be turned with either a slotted head or a philips head screw driver. This design also has a notch cut into the threaded portion which clears resin from the threads of powder coated boxes, making it easier to start the screws. Available with 1/4-28 threads only.

PRODUCT NO.	THREAD	HEIGHT	MATERIAL	FINISH
JH-20087	1/4-28	5/8"	STEEL	CLEAR PLATE
JH-20088	1/4-28	5/8"	STEEL	YELLOW PLATE
JH-20089	1/4-28	5/8"	18-8 (302) STAINLESS STEEL	BRIGHT
JH-20082	1/4-28	3/4"	18-8 (302) STAINLESS STEEL	BRIGHT
JH-20083	1/4-28	3/4"	STEEL	YELLOW PLATE
JH-20084	1/4-28	3/4"	STEEL	CLEAR PLATE

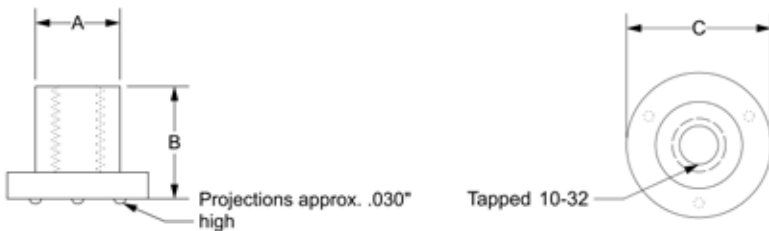
JIC Panel Mounting Weldnut



Application & Design

Intended to be welded to the interior of the JIC box. The JIC Panel Mounting Weldnuts are internally threaded 10-32 and provide a means for installing equipment mounting panels inside the box. The Steel and stainless Steel weldnuts have three weld projections on the bottom, the aluminum weldnuts have a convex bottom.

PRODUCT NO.	MATERIAL	MEASUREMENTS	FINISH
JH-20240	STEEL	A: .370 B: .445 C: .618	UNFINISHED
JH-20260	302 STAINLESS STEEL	A: .370 B: .490 C: .618	BRIGHT



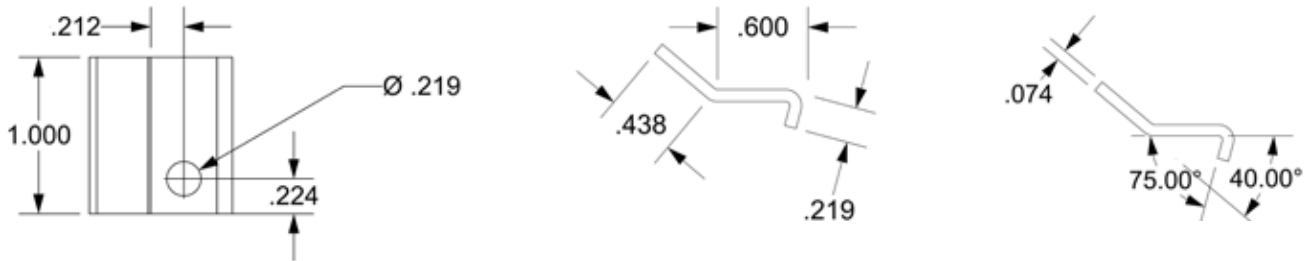
JIC Wireway Hinge



Application & Design

Used as part of the hinge of a Lift-Off Hinge Cover box. The JIC Lift-Off Hinge is designed to be welded to the body of the box in alignment with the formed lip of the cover, so that the Lift-Off Hinge engages the formed lip and holds cover secure in the closed position. When the cover is raised, the Lift-Off Hinge disengages and the cover can be removed.

PRODUCT NO.	MATERIAL	FINISH
JH-20208	STEEL	CLEAR PLATE



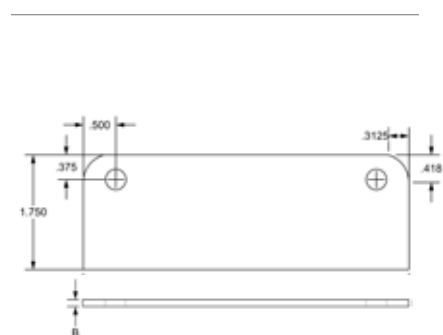


## JIC Style Mounting Feet



### Application & Design

The JIC Style Mounting Feet are used to mount the box to another surface. The feet are designed to be welded to the back of a JIC type box. Hole size and spacing are industry standard. All mounting feet made standard with 12 gauge material. Special order request for stainless steel.



PRODUCT NO.	LENGTH	MATERIAL	FINISH
JH-20403	3"	STEEL	NATURAL
JH-20423	3"	304 STAINLESS STEEL	POLISH
JH-20443	3"	316 STAINLESS STEEL	POLISH
JH-20463	3"	ALUMINUM	MILL
JH-20424	4"	304 STAINLESS STEEL	POLISH
JH-20444	4"	316 STAINLESS STEEL	POLISH
JH-20405	5"	STEEL	NATURAL
JH-20425	5"	304 STAINLESS STEEL	POLISH
JH-20445	5"	316 STAINLESS STEEL	POLISH
JH-20465	5"	ALUMINUM	MILL
JH-20426	6"	304 STAINLESS STEEL	POLISH
JH-20446	6"	316 STAINLESS STEEL	POLISH
JH-20407	7"	STEEL	NATURAL
JH-20427	7"	304 STAINLESS STEEL	POLISH
JH-20447	7"	316 STAINLESS STEEL	POLISH
JH-20467	7"	ALUMINUM	MILL
JH-20409	9"	STEEL	NATURAL
JH-20429	9"	304 STAINLESS STEEL	POLISH
JH-20449	9"	316 STAINLESS STEEL	POLISH
JH-20469	9"	ALUMINUM	MILL
JH-20411	11"	STEEL	NATURAL
JH-20431	11"	304 STAINLESS STEEL	POLISH
JH-20451	11"	316 STAINLESS STEEL	POLISH
JH-20471	11"	ALUMINUM	MILL
JH-20413	13"	STEEL	NATURAL
JH-20433	13"	304 STAINLESS STEEL	POLISH
JH-20453	13"	316 STAINLESS STEEL	POLISH
JH-20473	13"	ALUMINUM	MILL
JH-20434	14"	304 STAINLESS STEEL	POLISH
JH-20454	14"	316 STAINLESS STEEL	POLISH
JH-20435	15"	304 STAINLESS STEEL	POLISH
JH-20455	15"	316 STAINLESS STEEL	POLISH
JH-20437	17"	304 STAINLESS STEEL	POLISH
JH-20457	17"	316 STAINLESS STEEL	POLISH

## JIC Quick Release Clamp



### Application & Design

The JIC Quick Release Clamp is intended to be fastened to the existing tapped clamp bracket of a JIC junction box or JIC wireway in place of the standard screw down clamp. It provides quick access to the box and wireway interiors. JIC Quick Release Clamps are designed to be replacement parts for the standard JIC cover clamps.

Installation is accomplished by removing the standard cover clamp and then attaching the Quick Release Clamp to the clamp bracket using the existing cover clamp screw. Available in kit or as individual parts.

### JIC Quick Release Clamp Kits

Kits contain JIC Quick Release Clamp, installation instruction sheet and four shim washers which can be used between the clamp and bracket to adjust for proper gasket compression. (JIC Screws and JIC Cover Clamp Brackets are not supplied with kit.)

JIC QUICK RELEASE CLAMP KITS			
PRODUCT NO.	MATERIAL	FINISH	NOTES
JH-40155	304 STAINLESS STEEL	BRIGHT	
JH-40165	STEEL	YELLOW PLATE	
JH-40175	316 STAINLESS STEEL	BRIGHT	

JIC QUICK RELEASE CLAMP KIT PARTS			
JIC QUICK RELEASE CLAMP			
PRODUCT NO.	MATERIAL	FINISH	NOTES
JH-40150	304 STAINLESS STEEL	BRIGHT	
JH-40160	STEEL	YELLOW PLATE	
JH-40170	316 STAINLESS STEEL	BRIGHT	
JIC WASHER			
PRODUCT NO.	MATERIAL	FINISH	NOTES
NH-20140	316 STAINLESS STEEL	BRIGHT	1/4" THIN

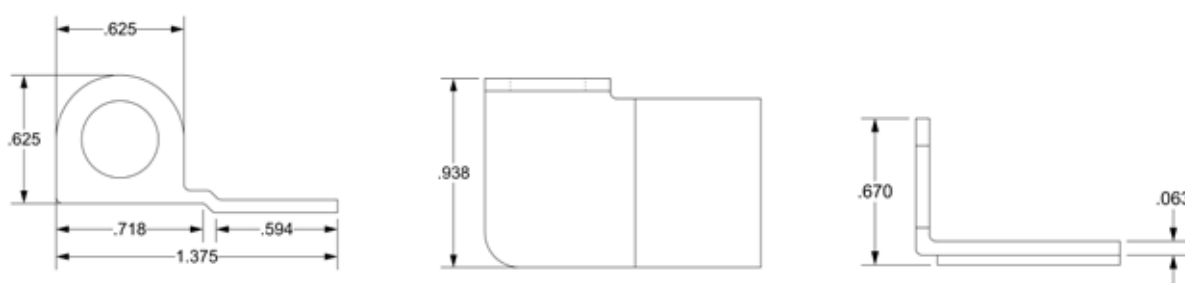
## JIC Padlock Cover Staple



### Application & Design

The JIC Padlock Cover Staple is designed to be welded to the cover of a standard hinge cover or clamp cover JIC style enclosure. When welded in alignment with the JIC Padlock Box Staple, it provides a means to secure the enclosure with a padlock.

PRODUCT NO.	MATERIAL	FINISH
JH-20100	STEEL	UNPLATED
JH-20104	304 STAINLESS STEEL	BRIGHT
JH-20105	316 STAINLESS STEEL	BRIGHT



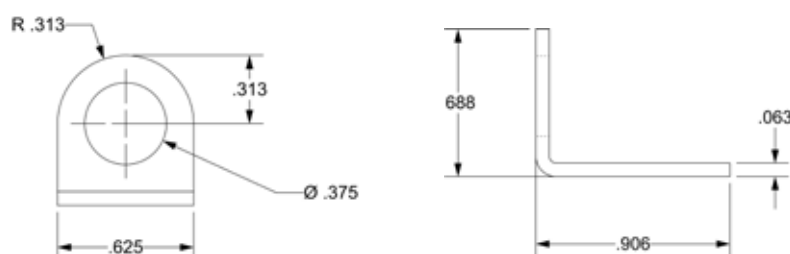
## JIC Padlock Box Staple



### Application & Design

The JIC Padlock Box Staple is designed to be welded to the body of a standard hinge cover or clamp cover JIC style enclosure. When welded in alignment with the JIC Padlock Cover Staple, it provides a means to secure the enclosure with a padlock.

PRODUCT NO.	MATERIAL	FINISH
JH-20150	STEEL	UNPLATED
JH-20154	304 STAINLESS STEEL	BRIGHT
JH-20155	316 STAINLESS STEEL	BRIGHT



## JIC Padlock Kit



### Application & Design

The JIC Padlock Kit includes both a cover staple and a box staple that work together to provide a padlock secured option for a JIC Enclosure. Kit is designed to be installed in the field or in-house; includes threaded studs for installation. Available as a special order item in 304 Stainless Steel and Steel.

PRODUCT NO.	MATERIAL	FINISH
JH-40100	316 STAINLESS STEEL	BRIGHT

## JIC Cover Chain



### Application & Design

The JIC Cover Chain holds the cover to box when cover is removed from the Lift-Off Cover Box. The Cover Chain is a formed wire type with a snap on each end. One end of the chain snaps into the hole in the Lift-Off hinge and the other end snaps into a hole which is drilled into the cover. The overall length is approximately 5 inches.

PRODUCT NO.	MATERIAL	FINISH
JH-40300	STEEL	YELLOW PLATED; END SNAPS ARE NICKEL PLATED STEEL
JH-40305	304 STAINLESS STEEL	NATURAL BRIGHT; END SNAPS ARE NICKEL PLATED STEEL

## Blind Riveting Nuts

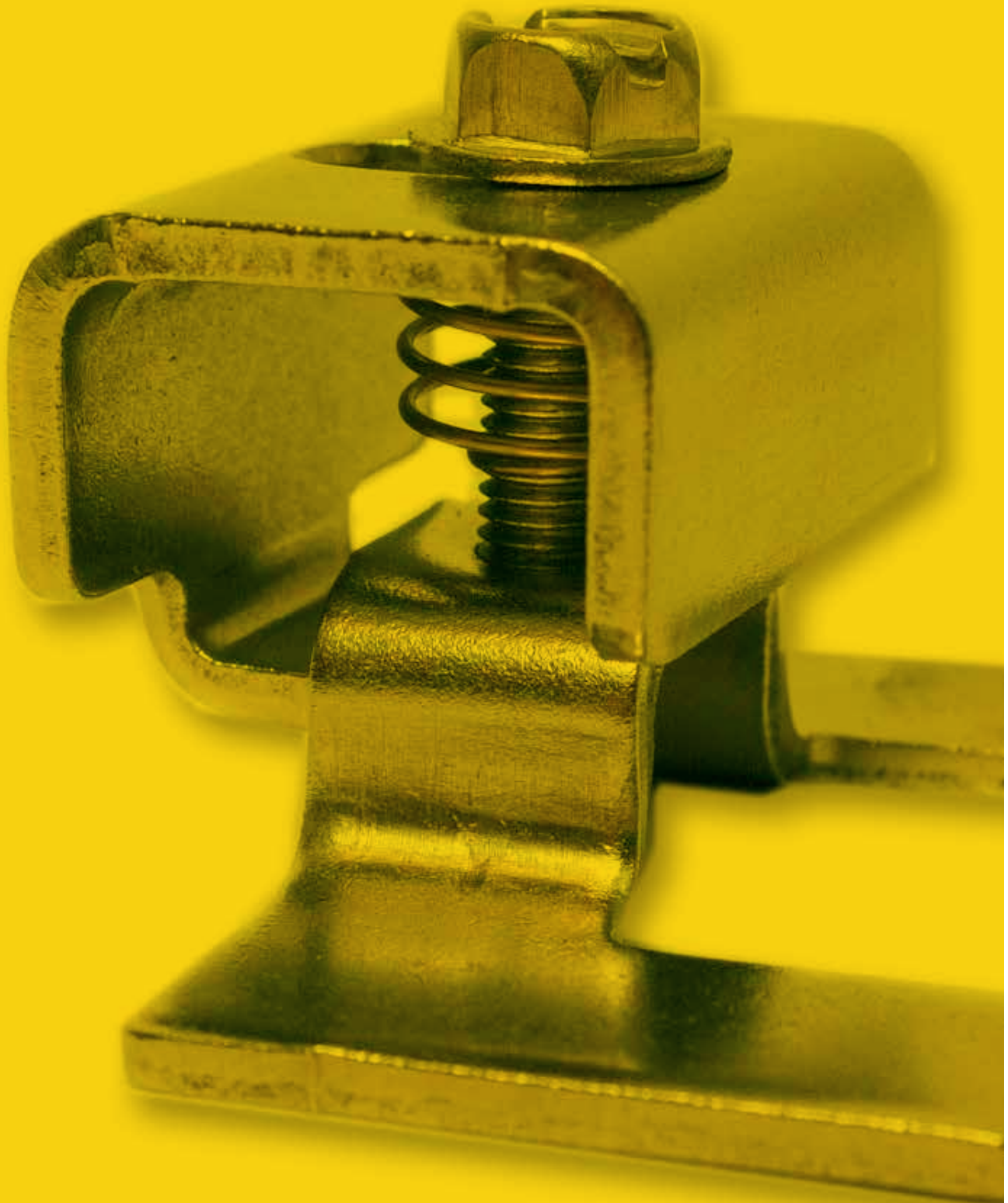


### Application & Design

Blind Riveting Nuts offer an oil-resistant tapped hole for "JIC" screw cover boxes, gasketed junction boxes and other enclosures, which have a screw type cover. Blind riveting nuts have a closed end and require a special tool for installation. Tools are available from FabTech. Also, aluminum and stainless steel material needs are available on special request.

PRODUCT NO.	THREAD	MATERIAL	FINISH	NOTE
FS-223007	10-32	STEEL	CLEAR PLATE	CLOSED END
FS-225007	1/4-20	STEEL	CLEAR PLATE	CLOSED END
FS-225007F	1/4-28	STEEL	CLEAR PLATE	CLOSED END

# WALL-MOUNT ENCLOSURES





## Door Clamp Assemblies Without Bracket: Types 4, 12 and PH

TYPE 4



TYPE 12



TYPE PH



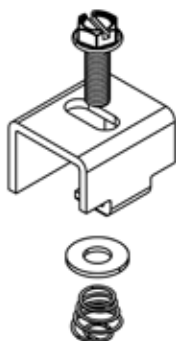
### Application & Design

FabTech's Door Clamp Assemblies are intended to be installed on existing door clamp brackets of TYPE 4 or 12 enclosures. Type PH is a Universal Door Clamp that can be used on NEMA 4 or NEMA 12 Enclosures. All parts are assembled using the spring to retain the screw and washer to the clamp. The assemblies are packed in Styrofoam trays or layered in special cartons for ease of storage, disbursement from stock and assembly onto your enclosures. Both 1/4-20 and 1/4-28 threads are standard with FabTech (except 316 stainless Steel has 1/4-28 threads only). See individual parts for design and dimensional data. Sold by tray or box—quantities vary. Break fee for less than tray quantity. Boxes of 250 cannot be broken.

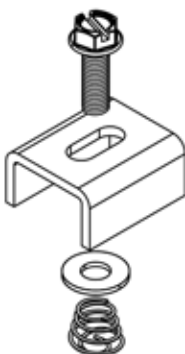
#### TYPE 4 DOOR CLAMP ASSEMBLY WITHOUT BRACKET

PRODUCT NO.	THREAD	MATERIAL	FINISH	PACKAGE
NH-40033	1/4-28	STEEL	YELLOW PLATE	TRAY OF 30 / BOX OF 150
NH-40035	1/4-28	STEEL	CLEAR PLATE	TRAY OF 30 / BOX OF 150
NH-40040	1/4-28	304 STAINLESS STEEL	BRIGHT	TRAY OF 30 / BOX OF 150
NH-40050	1/4-28	316 STAINLESS STEEL	BRIGHT	TRAY OF 30 / BOX OF 150
NH-41033	1/4-28	STEEL	YELLOW PLATE	BOX OF 250
NH-41035	1/4-28	STEEL	CLEAR PLATE	BOX OF 250
NH-41035TP	1/4-28	STEEL WITH STAINLESS STEEL TAMPERPROOF SCREW	CLEAR PLATE	BOX OF 250
NH-41040	1/4-28	304 STAINLESS STEEL	BRIGHT	BOX OF 250
NH-41040TP	1/4-28	STAINLESS STEEL TAMPERPROOF	BRIGHT	BOX OF 250
NH-41050	1/4-28	316 STAINLESS STEEL	BRIGHT	BOX OF 250
NH-40034	1/4-20	STEEL	YELLOW PLATE	TRAY OF 30 / BOX OF 150
NH-40036	1/4-20	STEEL	CLEAR PLATE	TRAY OF 30 / BOX OF 150
NH-40041	1/4-20	304 STAINLESS STEEL	BRIGHT	TRAY OF 30 / BOX OF 150
NH-41034	1/4-20	STEEL	YELLOW PLATE	BOX OF 250
NH-41036	1/4-20	STEEL	CLEAR PLATE	BOX OF 250
NH-41041	1/4-20	304 STAINLESS STEEL	BRIGHT	BOX OF 250

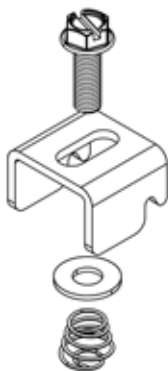
TYPE 4 (Dimensional Drawing on pg. 19)



TYPE 12 (Dimensional Drawing on pg. 19)



TYPE PH (Dimensional Drawing on pg. 19)

**TYPE 12 DOOR CLAMP ASSEMBLY WITHOUT BRACKET**

PRODUCT NO.	THREAD	MATERIAL	FINISH	PACKAGE
NH-40110	1/4-28	STEEL	YELLOW PLATE	TRAY OF 30 / BOX OF 150
NH-40112	1/4-28	STEEL	CLEAR PLATE	TRAY OF 30 / BOX OF 150
NH-40112TP	1/4-28	STEEL WITH STAINLESS STEEL TAMPERPROOF SCREW	CLEAR PLATE	BOX OF 250
NH-40120	1/4-28	304 STAINLESS STEEL	BRIGHT	TRAY OF 30 / BOX OF 150
NH-40120TP	1/4-28	STAINLESS STEEL TAMPERPROOF	BRIGHT	BOX OF 250
NH-41120	1/4-28	304 STAINLESS STEEL	BRIGHT	BOX OF 290
NH-40111	1/4-20	STEEL	YELLOW PLATE	TRAY OF 30 / BOX OF 150
NH-40113	1/4-20	STEEL	CLEAR PLATE	TRAY OF 30 / BOX OF 150
NH-40121	1/4-20	304 STAINLESS STEEL	BRIGHT	TRAY OF 30 / BOX OF 150
NH-41121	1/4-20	304 STAINLESS STEEL	BRIGHT	BOX OF 290

**TYPE PH DOOR CLAMP ASSEMBLY WITHOUT BRACKET**

PRODUCT NO.	THREAD	MATERIAL	FINISH	PACKAGE
NH-40045	1/4-28	304 STAINLESS STEEL	BRIGHT	TRAY OF 42 / BOX OF 210
NH-40045TP	1/4-28	STAINLESS STEEL TAMPERPROOF	BRIGHT	BOX OF 280
NH-40055	1/4-28	316 STAINLESS STEEL	BRIGHT	TRAY OF 42 / BOX OF 210
NH-40114	1/4-28	STEEL	YELLOW PLATE	TRAY OF 42 / BOX OF 210
NH-41045	1/4-28	304 STAINLESS STEEL	BRIGHT	BOX OF 280
NH-41047	1/4-28	304 STAINLESS STEEL WITH SLOTTED SCREW	BRIGHT	BOX OF 280
NH-41055	1/4-28	316 STAINLESS STEEL	BRIGHT	BOX OF 280
NH-41114	1/4-28	STEEL	YELLOW PLATE	BOX OF 280
NH-41117	1/4-28	STEEL WITH SLOTTED SCREW	CLEAR PLATE	BOX OF 280
NH-41117TP	1/4-28	STEEL WITH STAINLESS STEEL TAMPERPROOF SCREW	CLEAR PLATE	BOX OF 280
NH-40046	1/4-20	304 STAINLESS STEEL	BRIGHT	TRAY OF 42 / BOX OF 210
NH-41046	1/4-20	304 STAINLESS STEEL	BRIGHT	BOX OF 280
NH-41116	1/4-20	STEEL	YELLOW PLATE	BOX OF 280

## Door Clamp Assemblies With Bracket: Types 4, 12 and PH

TYPE 4



TYPE 12



TYPE PH



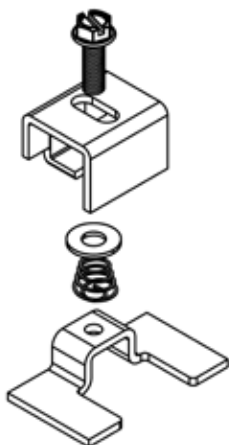
### Application & Design

FabTech's tapped Door Clamp Brackets are intended to be welded to the enclosure and the clamp assembly is then attached with the screw. These may be installed on TYPE 4 or 12 enclosures. Type PH is a Universal Door Clamp that can be used on NEMA 4 or NEMA 12 Enclosures. Door Clamps are assembled using the spring to retain the screw and washer to the clamp. The assemblies are packed in Styrofoam trays or layered in special cartons for ease of storage, disbursement from stock and assembly onto your enclosures. Clamp Brackets are shipped in a separate carton. Both 1/4-20 and 1/4-28 threads are standard with FabTech (except 316 stainless Steel has 1/4-28 threads only). See individual parts for design and dimensional data. Sold by tray or box — quantities vary. Break fee for less than tray quantity. Boxes cannot be broken. *Note: Brackets are bulk packaged and shipped separately.*

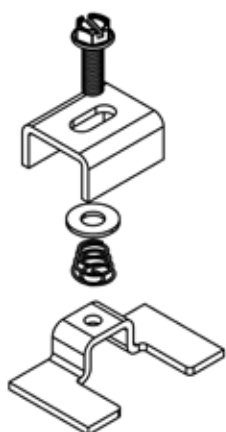
**TYPE 4 DOOR CLAMP ASSEMBLY WITH BRACKET**

PRODUCT NO.	THREAD	MATERIAL	FINISH	PACKAGE
NH-40006	1/4-28	STEEL	YELLOW PLATE	TRAY OF 30/ BOX OF 150
NH-40008	1/4-28	STEEL	CLEAR PLATE	TRAY OF 30/ BOX OF 150
NH-40010	1/4-28	304 STAINLESS STEEL	BRIGHT	TRAY OF 30/ BOX OF 150
NH-40020	1/4-28	316 STAINLESS STEEL	BRIGHT	TRAY OF 30/ BOX OF 150
NH-41006	1/4-28	STEEL	YELLOW PLATE	BOX OF 250
NH-41008	1/4-28	STEEL	CLEAR PLATE	BOX OF 250
NH-41010	1/4-28	304 STAINLESS STEEL	BRIGHT	BOX OF 250
NH-41020	1/4-28	316 STAINLESS STEEL	BRIGHT	BOX OF 250
NH-40007	1/4-20	STEEL	CLEAR PLATE	TRAY OF 30/ BOX OF 150
NH-40009	1/4-20	STEEL	YELLOW PLATE	TRAY OF 30/ BOX OF 150
NH-40011	1/4-20	304 STAINLESS STEEL	BRIGHT	TRAY OF 30/ BOX OF 150
NH-41007	1/4-20	STEEL	CLEAR PLATE	BOX OF 250
NH-41009	1/4-20	STEEL	YELLOW PLATE	BOX OF 250
NH-41011	1/4-20	304 STAINLESS STEEL	BRIGHT	BOX OF 250

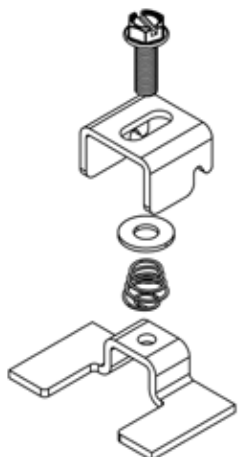
TYPE 4



TYPE 12



TYPE PH

**TYPE 12 DOOR CLAMP ASSEMBLY WITH BRACKET**

PRODUCT NO.	THREAD	MATERIAL	FINISH	PACKAGE
NH-40075	1/4-28	304 STAINLESS STEEL	BRIGHT	TRAY OF 30/ BOX OF 150
NH-40080	1/4-28	STEEL	YELLOW PLATE	TRAY OF 30/ BOX OF 150
NH-40082	1/4-28	STEEL	CLEAR PLATE	TRAY OF 30/ BOX OF 150
NH-41075	1/4-28	304 STAINLESS STEEL	BRIGHT	BOX OF 290
NH-41080	1/4-28	STEEL	YELLOW PLATE	BOX OF 290
NH-41082	1/4-28	STEEL	CLEAR PLATE	BOX OF 290
NH-40076	1/4-20	304 STAINLESS STEEL	BRIGHT	TRAY OF 30/ BOX OF 150
NH-40081	1/4-20	STEEL	YELLOW PLATE	TRAY OF 30/ BOX OF 150
NH-40083	1/4-20	STEEL	CLEAR PLATE	TRAY OF 30/ BOX OF 150
NH-41076	1/4-20	304 STAINLESS STEEL	BRIGHT	BOX OF 290
NH-41081	1/4-20	STEEL	YELLOW PLATE	BOX OF 290
NH-41083	1/4-20	STEEL	CLEAR PLATE	BOX OF 290

**TYPE PH DOOR CLAMP ASSEMBLY WITH BRACKET**

PRODUCT NO.	THREAD	MATERIAL	FINISH	PACKAGE
NH-40015	1/4-28	304 STAINLESS STEEL	BRIGHT	TRAY OF 42
NH-40025	1/4-28	316 STAINLESS STEEL	BRIGHT	TRAY OF 42
NH-41015	1/4-28	304 STAINLESS STEEL	BRIGHT	BOX OF 280
NH-41025	1/4-28	316 STAINLESS STEEL	BRIGHT	BOX OF 280

## Door Clamps: Types 4, 12 and PH

TYPE 4



TYPE 12



TYPE PH



### Application & Design

FabTech's Door Clamps are designed to be used with a clamp screw, and a 316 stainless Steel washer and spring to make up a Door Clamp Assembly. This assembly is fastened to a clamp bracket, which is welded to the enclosure. When the door is closed, the clamp engages the formed lip of the enclosure door. When the screw is tightened, the clamp secures the door in the closed position. FabTech's Door Clamps are designed to fit the most widely accepted style of TYPE 4 and TYPE 12 industrial electrical enclosures.

The TYPE 4 Door Clamp is a channel shape with one leg incorporating a compression foot. The purpose of this compression foot is to prevent over-tightening the clamp. The TYPE 4 Door Clamp was designed for use on watertight enclosures and is identified as a N-4 clamp.

The TYPE 12 Door Clamp is a plain channel shape and either leg may be used to clamp against the formed lip of the door. The TYPE 12 clamp was designed to be used on dust tight enclosures and is identified as a N-12 clamp.

The Type PH is a universal clamp to be used on NEMA 4 or NEMA 12 enclosures.

#### TYPE 4 DOOR CLAMP

PRODUCT NO.	MATERIAL	FINISH	PACKAGE
NH-20004	STEEL	YELLOW PLATE	BOX OF 500
NH-20005	STEEL	CLEAR PLATE	BOX OF 500
NH-20010	304 STAINLESS STEEL	BRIGHT	BOX OF 500
NH-20020	316 STAINLESS STEEL	BRIGHT	BOX OF 500

#### TYPE 12 DOOR CLAMP

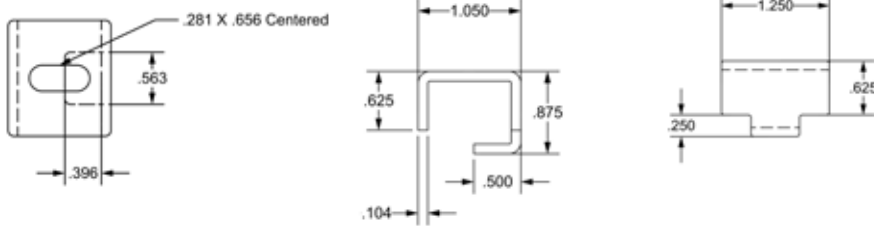
PRODUCT NO.	MATERIAL	FINISH	PACKAGE
NH-20030	STEEL	YELLOW PLATE	BOX OF 500
NH-20035	STEEL	CLEAR PLATE	BOX OF 500
NH-20040	304 STAINLESS STEEL	BRIGHT	BOX OF 500

#### TYPE PH DOOR CLAMP

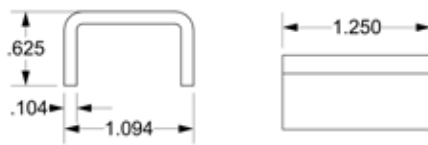
PRODUCT NO.	MATERIAL	FINISH	PACKAGE
NH-20011	304 STAINLESS STEEL	BRIGHT	BOX OF 500
NH-20012	STEEL	YELLOW PLATE	BOX OF 500
NH-20013	STEEL	CLEAR PLATE	BOX OF 500
NH-20016	316 STAINLESS STEEL	BRIGHT	BOX OF 500



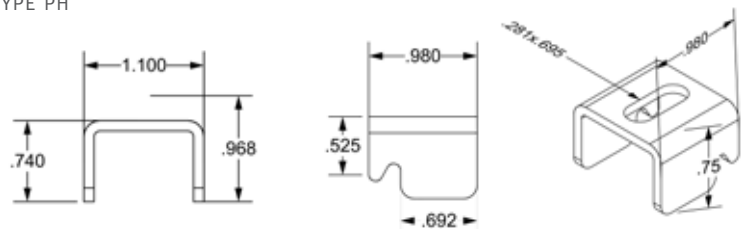
TYPE 4



TYPE 12



TYPE PH



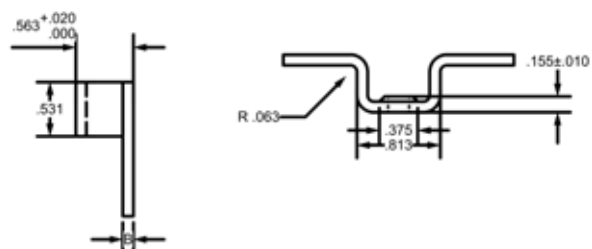
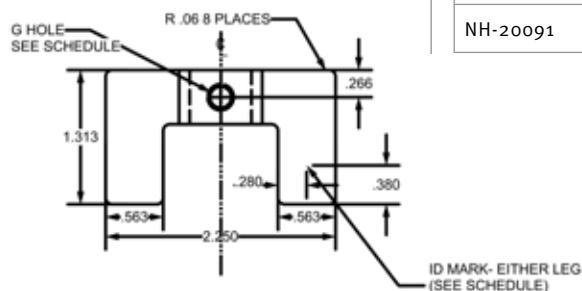
## Door Clamp Hardware — Bracket: Types 4, 12 and PH

### Application & Design

FabTech's Door Clamp Bracket is intended to be welded to the enclosure to accept either the standard door clamp assemblies or the fast operating clamp assemblies. FabTech's Door Clamp Bracket is designed to provide sufficient strength so that the door clamps may be tightened to achieve the correct sealing pressure for both TYPE 4, TYPE 12 and TYPE PH enclosures. The threaded holes are slightly extruded to ensure sufficient thread engagement for both 1/4-20 and 1/4-28 screws.



PRODUCT NO.	THREAD	MATERIAL	FINISH
NH-20050	1/4-28	STEEL	UNCOATED
NH-20070	1/4-28	304 STAINLESS STEEL	BRIGHT
NH-20080	1/4-28	316 STAINLESS STEEL	BRIGHT
NH-20090	1/4-28	ALUMINUM	MILL
NH-20051	1/4-20	STEEL	UNCOATED
NH-20071	1/4-20	304 STAINLESS STEEL	BRIGHT
NH-20091	1/4-20	ALUMINUM	MILL



## Door Clamp Hardware — Screw: Types 4, 12 and PH



PRODUCT NO.	THREAD	HEAD	MATERIAL	FINISH	NOTES
NH-20106	1/4-28	SLOT HEXAGON	STEEL	YELLOW PLATE	WASHER HEAD
NH-20107	1/4-28	SLOT HEXAGON	STEEL	CLEAR PLATE	WASHER HEAD
NH-20102	1/4-28	SLOT HEXAGON	304 STAINLESS STEEL	BRIGHT	WASHER HEAD
NH-20101	1/4-28	SLOT HEXAGON	316 STAINLESS STEEL	BRIGHT	WASHER HEAD
NH-20108	1/4-20	SLOT HEXAGON	STEEL	YELLOW PLATE	WASHER HEAD
NH-20109	1/4-20	SLOT HEXAGON	STEEL	CLEAR PLATE	WASHER HEAD
NH-20103	1/4-20	SLOT HEXAGON	304 STAINLESS STEEL	BRIGHT	WASHER HEAD

## Door Clamp Hardware — Spring: Types 4, 12 and PH



PRODUCT NO.	THREAD	MATERIAL	FINISH
NH-20110	1/4-28	STAINLESS STEEL	BRIGHT
NH-20117	1/4-20	STAINLESS STEEL	BRIGHT

## Door Clamp Hardware — Washer: Types 4, 12 and PH



PRODUCT NO.	SIZE	MATERIAL	FINISH
NH-20140	1/4" THIN	316 STAINLESS STEEL	BRIGHT

Padlock Hasp and Staple Set

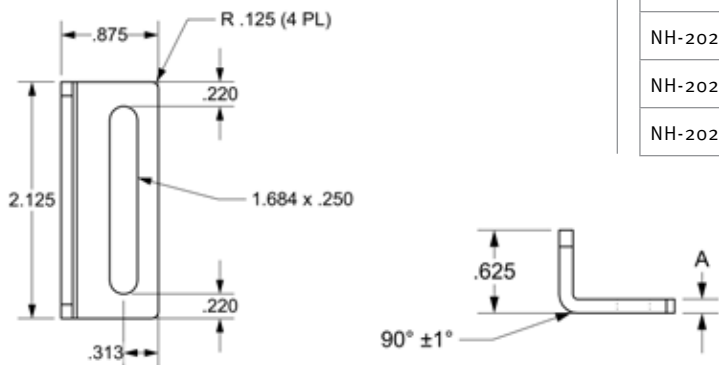


Application & Design

The Padlock Hasp and Staple can be sold as a set or individually. The function of the Padlock Hasp is to be welded to the enclosure door in alignment with the Padlock Staple to provide padlocking capability. May be used on both TYPE 4 and TYPE 12 enclosures. The heavy duty construction of this product resists distortion under severe abuse. The slot is slightly oversized to allow greater flexibility when aligning with the Hasp. Seal provision provided for security.

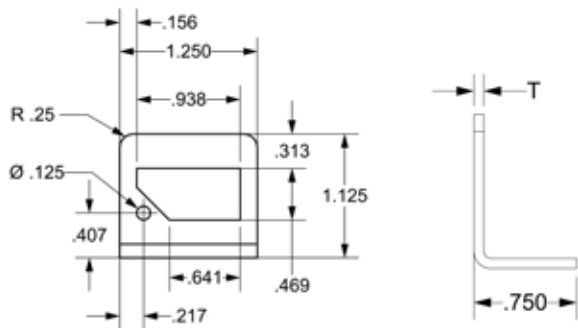
PRODUCT NO.	MATERIAL	FINISH
NH-40130	STEEL	UNCOATED
NH-40134	304 STAINLESS STEEL	BRIGHT
NH-40137	316 STAINLESS STEEL	BRIGHT
NH-40138	5052 H32 ALUMINUM	MILL

Padlock Hasp



PRODUCT NO.	MATERIAL	FINISH
NH-20210	STEEL	UNCOATED
NH-20230	304 STAINLESS STEEL	BRIGHT
NH-20240	316 STAINLESS STEEL	BRIGHT
NH-20250	5052 H32 ALUMINUM	MILL

Padlock Staple



PRODUCT NO.	MATERIAL	FINISH
NH-20260	STEEL	UNCOATED
NH-20280	304 STAINLESS STEEL	BRIGHT
NH-20290	316 STAINLESS STEEL	BRIGHT
NH-20300	5052 H32 ALUMINUM	MILL

Nema Mounting Foot

NEMA FLAT FOR TYPE 4 AND 12



NEMA OFFSET FOR TYPE 3R



NEMA FLAT WITH GROUNDING HOLE



Application & Design

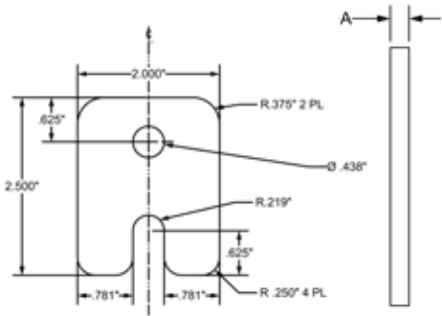
FabTech's Nema Mounting Foot is designed to be welded to the back of the enclosure and is used to mount the enclosure to another surface. When used as a top mounting foot, the round hole is exposed. When used as a bottom mounting foot, the slot is exposed. FabTech's Nema Mounting Foot is reversible except for the NEMA offset for Type 3R. This version mounts on the top of the box only.

NEMA FLAT				
PRODUCT NO.	THICKNESS	MATERIAL	FINISH	NOTES
NH-20310	A: .179	STEEL	UNCOATED	
NH-20320	A: .135	304 STAINLESS STEEL	BRIGHT	
NH-20330	A: .135	316 STAINLESS STEEL	BRIGHT	
NH-20340	A: .187	60676 ALUMINUM	MILL	

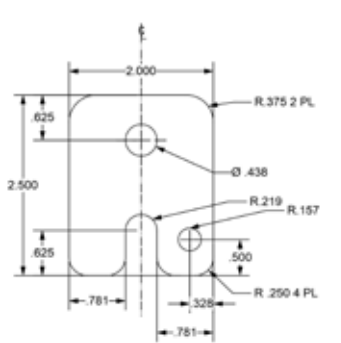
NEMA OFFSET				
PRODUCT NO.	THICKNESS	MATERIAL	FINISH	NOTES
NH-20310-OS	A: .179	STEEL	UNCOATED	USE FOR NEMA 3R ENCLOSURE

NEMA FLAT WITH GROUNDING HOLE				
PRODUCT NO.	THICKNESS	MATERIAL	FINISH	NOTES
NH-20311	A: .179	STEEL	UNCOATED	TWO HOLES
NH-20312	A: .179	STEEL	CLEAR PLATE	TWO HOLES

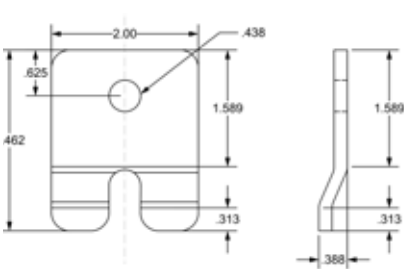
NEMA FLAT FOR TYPE 4 AND 12



NEMA FLAT WITH GROUNDING HOLE



NEMA OFFSET FOR TYPE 3R



## Euro Mounting Foot



### Application & Design

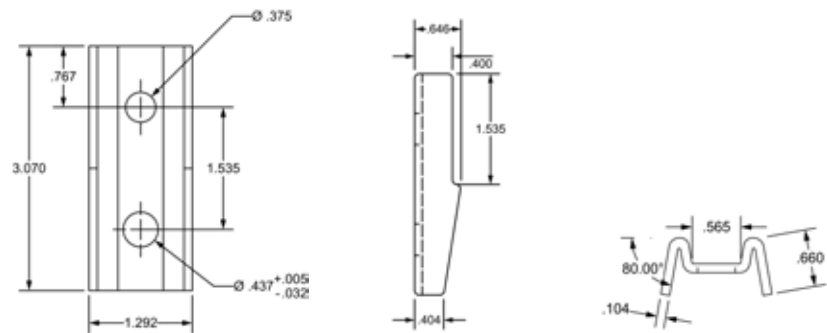
Euro Mounting feet are made to be bolted on to the Euro Style Enclosure. The feet are universal and can be used on the top or the bottom of the enclosure.

#### EURO MOUNTING FOOT KIT

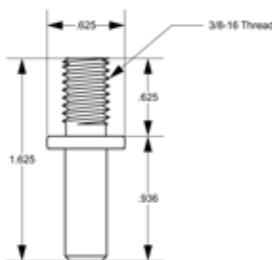
PRODUCT NO.	MATERIAL	FINISH	NOTES
EH-40320	304 STAINLESS STEEL	BRIGHT	CONTAINS 4 FEET AND MOUNTING HARDWARE
EH-40322	304 STAINLESS STEEL	BRIGHT	CONTAINS 4 FEET, MOUNTING HARDWARE AND 4 EXTRA WASHERS

#### EURO MOUNTING FOOT KIT PARTS

PRODUCT NO.	MATERIAL	FINISH	NOTES
EH-20310	STEEL	UNCOATED	
EH-20320	304 STAINLESS STEEL	BRIGHT	



## Panel Mounting Collar Stud



### Application & Design

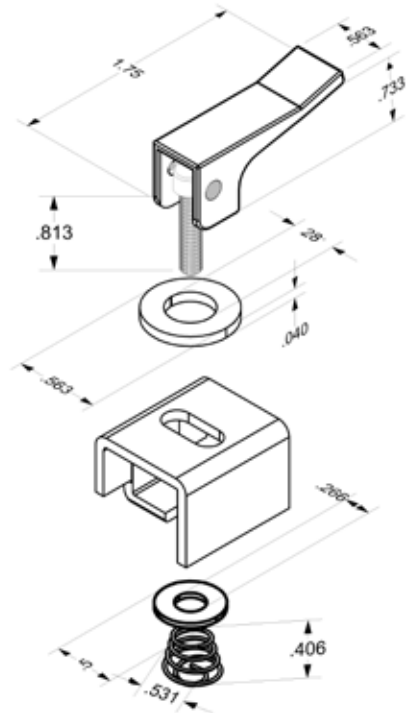
The Panel Mounting Collar Stud is intended to be welded to a flat surface such as the interior rear or side of an enclosure to support equipment and mounting panels. Can be installed with CD welding apparatus or by arc welding. The collar positions the item to be mounted at a distance of .94 from the mounting surface. The stud is threaded to accept 3/8-16 hex nuts for securing the item into the enclosure. An arc shield is furnished to contain the arc during the welding process.

PRODUCT NO.	THREAD	MATERIAL	FINISH	NOTES
NH-20350	3/8-16	STEEL	UNCOATED	WITH ARC SHIELDS
NH-20360	3/8-16	302 STAINLESS STEEL	UNCOATED	WITH ARC SHIELDS
NH-20351	3/8-16	STEEL	COPPER CLAD	CD TYPE
NH-20361	3/8-16	302 STAINLESS STEEL	UNCOATED	CD TYPE



Fast Operating Door Clamps: Lever and Clamp Assembly

NEMA 4 CLAMP SHOWN



Application & Design

FabTech’s Fast Operating Lever and Door Clamp Assemblies are intended to be installed on the existing clamp brackets of TYPE 4 or TYPE 12 enclosures. All parts are assembled using the spring to retain the Lever Assembly, Door Clamp and the 316 stainless Steel washer. The Lever Assembly is furnished with a special size washer required to facilitate the proper operation of the lever. When the door is closed, the clamp engages the formed lip of the enclosure door. When the lever is depressed, the clamp secures the door in the closed position. The clamp is released by lifting up on the lever. Sealing pressure can be adjusted by rotating the lever when it is in the disengaged position. If you wish to use existing hardware and convert it to the fast operating type, individual lever assemblies may be purchased separately (see below). Available with 1/4–20 and 1/4–28 threads (except 316 stainless Steel which has 1/4–28 threads only).

PRODUCT NO.	TYPE	THREAD	MATERIAL	FINISH
NH-40230	4	1/4–28	304 STAINLESS STEEL	BRIGHT
NH-40240	4	1/4–28	316 STAINLESS STEEL	BRIGHT
NH-40210	12	1/4–28	304 STAINLESS STEEL	BRIGHT
NH-40247	PH	1/4–28	316 STAINLESS STEEL	BRIGHT
NH-40252	PH	1/4–28	304 STAINLESS STEEL	BRIGHT
NH-40231	4	1/4–20	304 STAINLESS STEEL	BRIGHT
NH-40211	12	1/4–20	304 STAINLESS STEEL	BRIGHT
NH-40243	PH	1/4–20	304 STAINLESS STEEL	BRIGHT

Fast Operating Door Clamps: Lever Assembly Only

Application & Design

The Fast Operating Door Clamp can be purchased as a Lever Assembly only which includes a lever and washer.

PRODUCT NO.	THREAD	MATERIAL	FINISH
NH-40150	1/4–28	304 STAINLESS STEEL	BRIGHT
NH-40160	1/4–28	316 STAINLESS STEEL	BRIGHT
NH-40151	1/4–20	304 STAINLESS STEEL	BRIGHT

## Adjustable Door Stop Kit

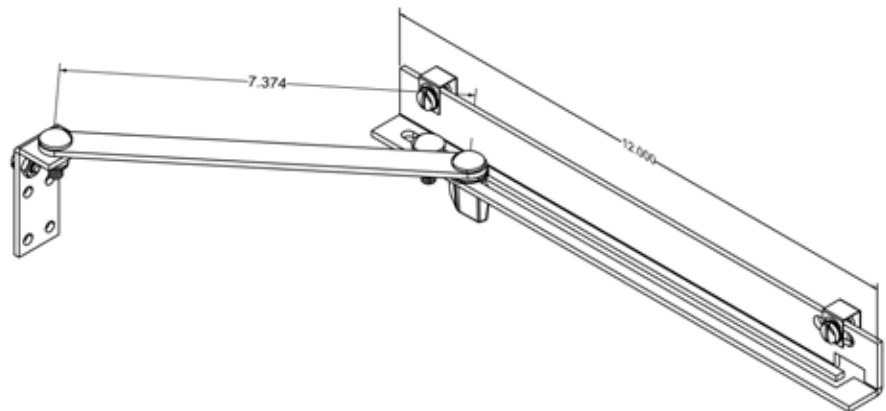


### Application & Design

FabTech designed the Adjustable Door Stop Kit for use on most standard Type 4 and Type 12 enclosures to secure the door in an open position. It may be installed on the top or bottom of the door frame. Installation requires the drilling of (2)  $\frac{7}{32}$  holes in the enclosure and (2)  $\frac{7}{32}$  holes in the door. The door stop may be adjusted to stop the door at any angle up to  $90^\circ$ . When the door is closed, the door stop retracts to an out of the way position. To operate properly, the door must open horizontally and the width of the enclosure must be 16 inches or more. Hardware is supplied for installation.

PACKAGING NOTE: These kits are individually packaged in poly bags. They are generically labeled for use without remarking or can be brand labeled if desired.

PRODUCT NO.	MATERIAL	FINISH
NH-45005C	STEEL	CLEAR PLATE
NH-45005Y	STEEL	YELLOW PLATE
NH-45010	304 STAINLESS STEEL	BRIGHT
NH-45013	316 STAINLESS STEEL	BRIGHT



90 Degree Door Stop Kit

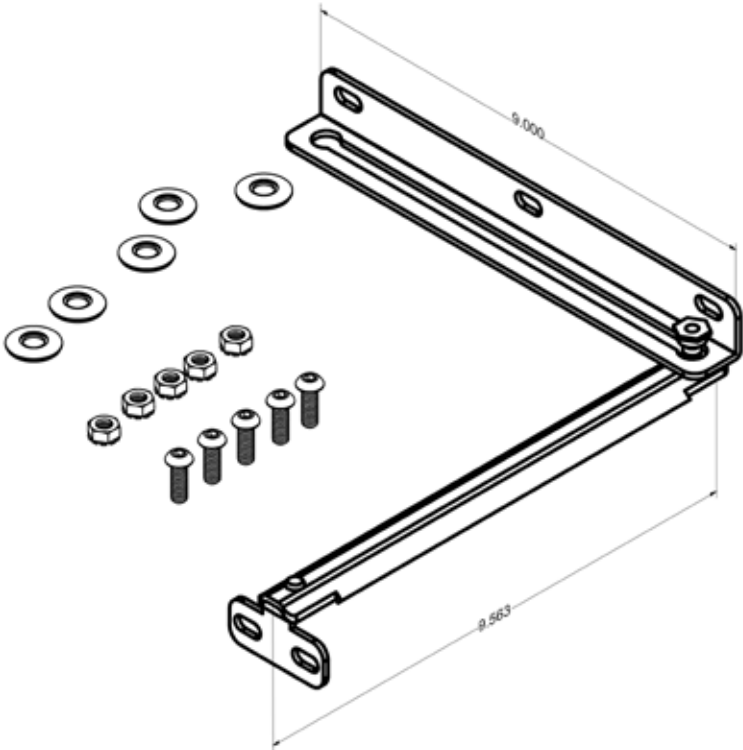


Application & Design

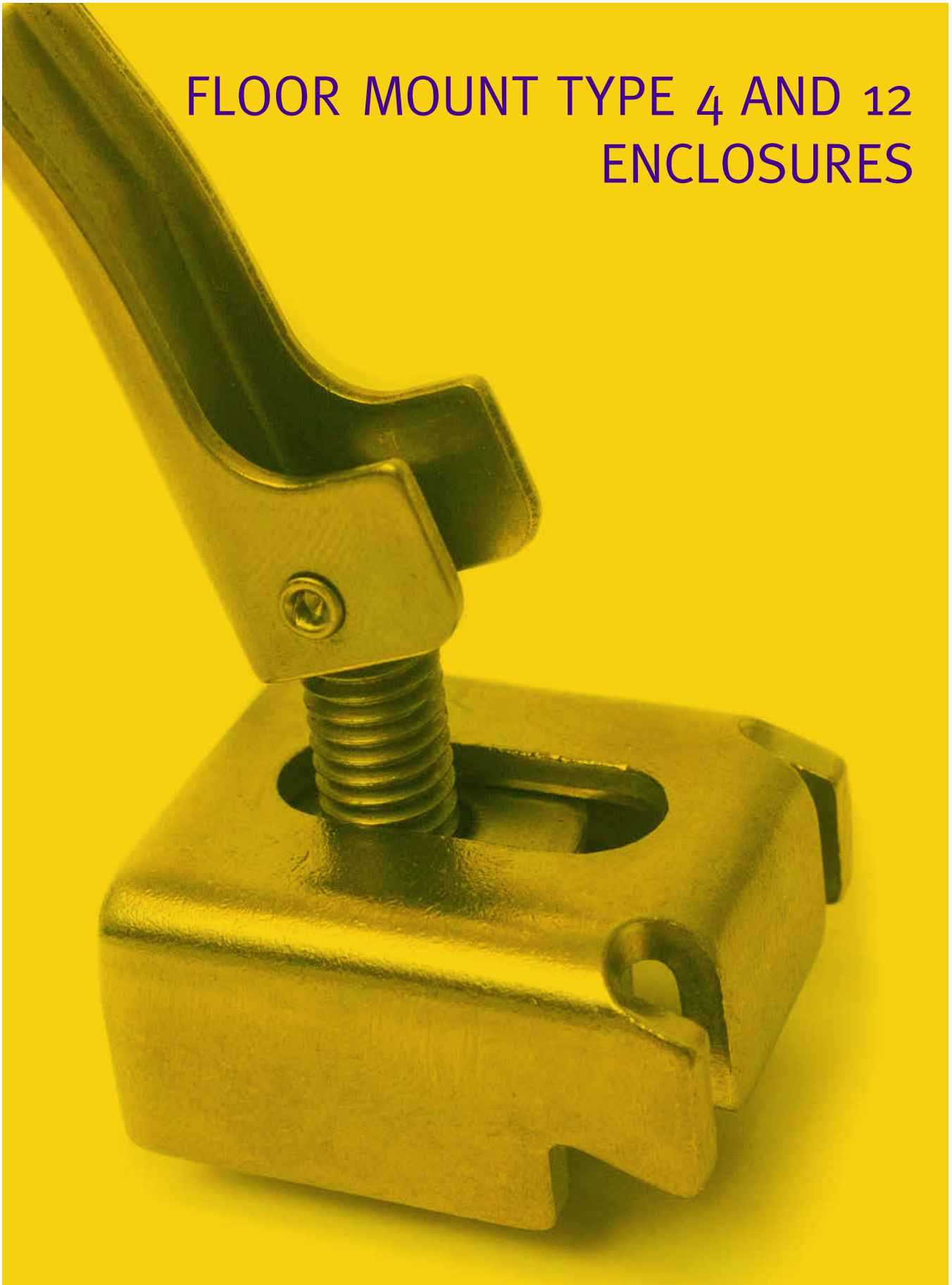
FabTech Supply designed the 90 Degree Door Stop Kit for use on most standard Type 4 and Type 12 enclosures to secure the door in an open position. The 90 Degree Door Stop Kit can be mounted on the top or the bottom of the enclosure opening. The door stop has a tapered bolt that will lock the door open at 90 degrees. When the door is closed, the door stop retracts to an out of the way position. To operate properly, the door must open horizontally and the width of the enclosure must be 16 inches or more. Installation requires the drilling of 7/32 holes in the enclosure and the door or 1/4-20 studs can be welded to the enclosure during fabrication to install the door stop. Hardware for installation, bolts, nuts and sealing washers, included for in field installation.

PACKAGING NOTE: These kits are individually packaged in poly bags. They are generically labeled for use without remarking or can be brand labeled if desired.

PRODUCT NO.	MATERIAL	FINISH
NH-45012	304 STAINLESS STEEL	BRIGHT



# FLOOR MOUNT TYPE 4 AND 12 ENCLOSURES



## Heavy Duty Door Clamp



(Dimensional Drawing on pg. 29)

### Application & Design

FabTech's Heavy Duty Door Clamp Hardware is designed to secure the doors on single and double door TYPE 4 floor mounted and free standing enclosures. The tapped bases are intended to be welded to the body of the enclosure and the clamp attached with the bolt and washer. When the door is closed, the clamp engages the lip of the enclosure door. As the bolt is tightened, the clamp pushes the door against the gasket.

Kits includes Clamp, Base Block, Bolt and Washer.

#### HEAVY DUTY DOOR CLAMP ASSEMBLY

PRODUCT NO.	MATERIAL	FINISH
NH-40060	304 STAINLESS STEEL	BRIGHT WITHOUT BASE BLOCK
NH-40066	304 STAINLESS STEEL	BRIGHT WITH STEEL BASE BLOCK
NH-40065	304 STAINLESS STEEL	BRIGHT WITH 304 STAINLESS STEEL BASE BLOCK
NH-40062	316 STAINLESS STEEL	BRIGHT WITHOUT BASE BLOCK
NH-40064	316 STAINLESS STEEL	BRIGHT WITH 316 STAINLESS STEEL BASE BLOCK

#### HEAVY DUTY DOOR CLAMP ASSEMBLY PARTS

##### CLAMP

PRODUCT NO.	MATERIAL	FINISH
NH-20001	304 STAINLESS STEEL	BRIGHT
NH-20002	316 STAINLESS STEEL	BRIGHT

##### BASE BLOCK

PRODUCT NO.	THREAD	MATERIAL	FINISH
NH-20201	3/8-16	STEEL	UNCOATED
NH-20204	3/8-16	304 STAINLESS STEEL	BRIGHT
NH-20202	3/8-16	316 STAINLESS STEEL	BRIGHT

##### BOLT

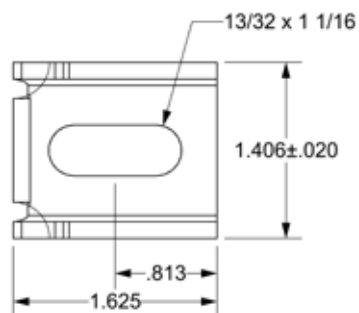
PRODUCT NO.	THREAD	MATERIAL	FINISH
FS-107151	3/8-16 x 3/4	304 STAINLESS STEEL	BRIGHT
FS-117151	3/8-16 x 3/4	316 STAINLESS STEEL	BRIGHT

##### WASHER

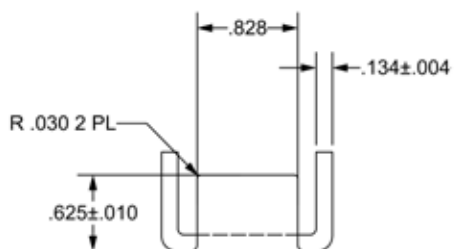
PRODUCT NO.	MATERIAL	FINISH
FS-307009	304 STAINLESS STEEL	BRIGHT
FS-317009	316 STAINLESS STEEL	BRIGHT



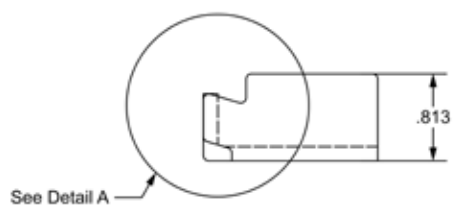
CLAMP



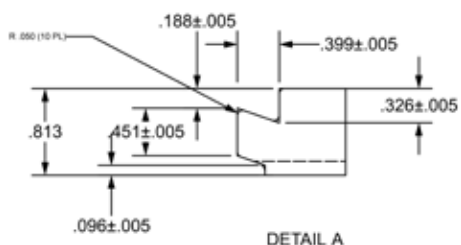
TOP VIEW



END VIEW



SIDE VIEW

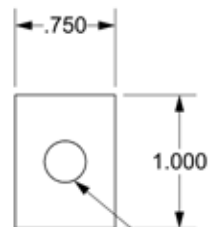


DETAIL A

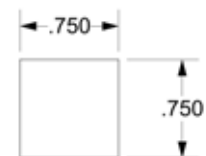
BASE BLOCK



TOP VIEW

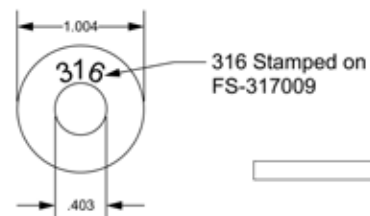


END VIEW

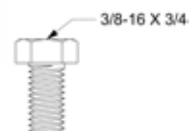


3/8-16 Tapped Thru Hole

WASHER



BOLT



## Fast Operating Heavy Duty Door Clamp Assembly



(Dimensional Drawing on pg. 31)

### Application & Design

FabTech's Fast Operating Heavy Duty Door Clamp Hardware is intended to be installed onto the clamp base of the heavy duty TYPE 4 enclosures. When the door is closed, the clamp is slid toward the door until it engages the lip of door. As the lever is pushed down, the clamp pushes the door against the gasket. The pressure is released by simply pulling up on the lever. Sealing pressure can be adjusted by rotating the lever when it is in the disengaged position. If you wish to use existing hardware and convert it to the fast acting type, you may purchase just the lever assembly. Available with 3/8-16 threads only.

Kits includes Clamp, Base Block, Fast Operating Lever and Washer.

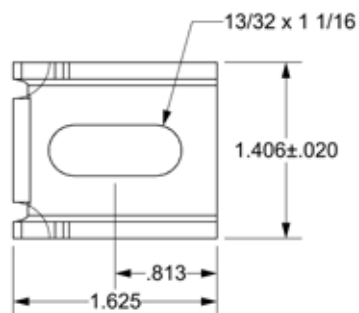
#### FAST OPERATING HEAVY DUTY DOOR CLAMP ASSEMBLY KITS

PRODUCT NO.	MATERIAL	FINISH
NH-40235	304 STAINLESS STEEL	BRIGHT WITHOUT BASE BLOCK
NH-40236	304 STAINLESS STEEL	BRIGHT WITH 304 STAINLESS STEEL BASE BLOCK
NH-40237	304 STAINLESS STEEL	BRIGHT WITH STEEL BASE BLOCK
NH-40245	316 STAINLESS STEEL	BRIGHT WITHOUT BASE BLOCK
NH-40246	316 STAINLESS STEEL	BRIGHT WITH 316 STAINLESS STEEL BASE BLOCK

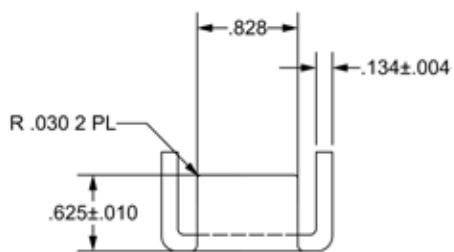
#### FAST OPERATING HEAVY DUTY DOOR CLAMP ASSEMBLY PARTS

CLAMP			
PRODUCT NO.	MATERIAL		FINISH
NH-20001	304 STAINLESS STEEL		BRIGHT
NH-20002	316 STAINLESS STEEL		BRIGHT
BASE BLOCK			
PRODUCT NO.	THREAD	MATERIAL	FINISH
NH-20201	3/8-16	STEEL	NATURAL
NH-20204	3/8-16	304 STAINLESS STEEL	BRIGHT
NH-20202	3/8-16	316 STAINLESS STEEL	BRIGHT
FAST OPERATING LEVER			
PRODUCT NO.	THREAD	MATERIAL	FINISH
NH-40155	3/8-16	304 STAINLESS STEEL	BRIGHT
NH-40165	3/8-16	316 STAINLESS STEEL	BRIGHT
WASHER			
PRODUCT NO.	MATERIAL		FINISH
FS-307009	304 STAINLESS STEEL		BRIGHT
FS-317009	316 STAINLESS STEEL		BRIGHT

CLAMP



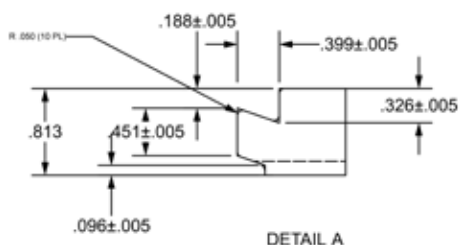
TOP VIEW



END VIEW



SIDE VIEW

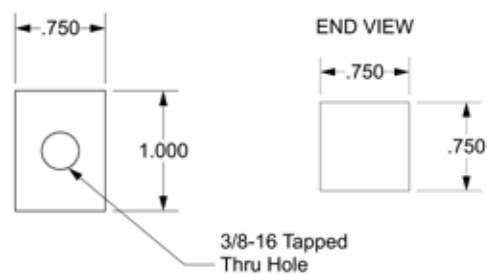


DETAIL A

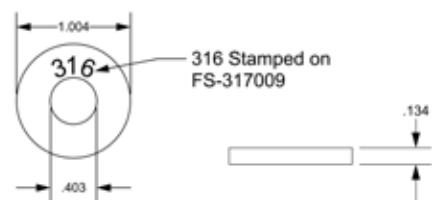
BOLT



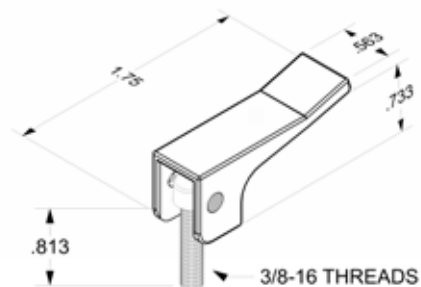
TOP VIEW



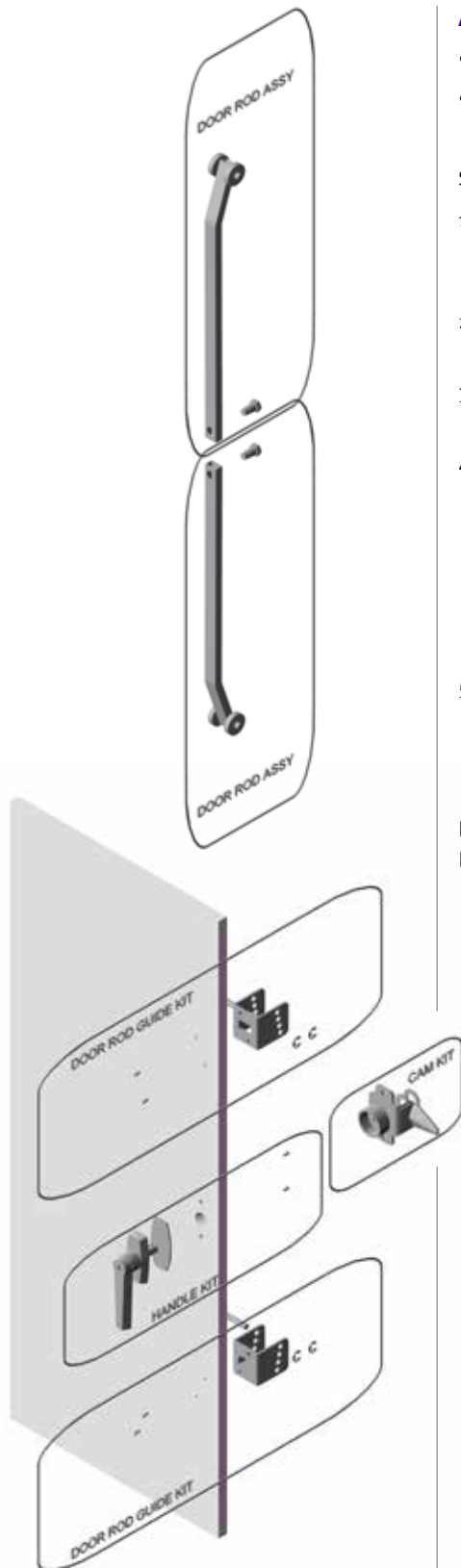
WASHER



LEVER



## Door Latch Kits



### Application & Design

- Single Point or Three Point
- Key Locking, Nonlocking or Padlocking

#### STEPS

1. Determine the operation and style of the handle kit you need. FabTech offers both single point and three point operations in the following styles: key locking clockwise, key locking counter clockwise, nonlocking and padlocking.
2. Next, you will need a cam kit for your latch. If you have chosen a single point latch, your kit is complete, but if you have selected a 3 point system, continue on to step 3.
3. Determine the proper rod length needed by measuring the door opening of your enclosure as shown below.

4. Select the proper rod assembly by matching the size of your enclosure opening to the one shown in the rod selection.

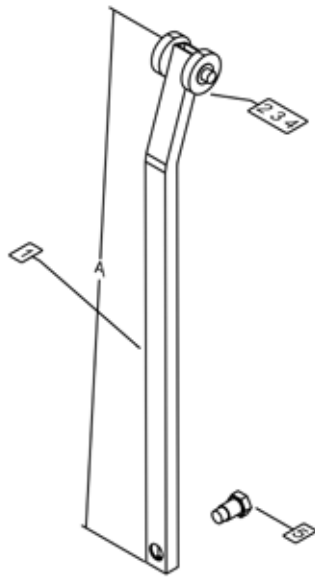
NOTE: The opening sizes are based on the opening of an industry standard TYPE 4 or TYPE 12 enclosure of the single door, double door, "FS", "FSDD" and multidoor styles. If your enclosure opening does not match one of those shown by 1/8", select the next larger size and cut rod off to the proper dimension and redrill .409 diameter hole for shoulder bolt.

5. Next, select the style of door rod guide kit that you need from pages 24 and 25. Two styles are offered: adjustable height and fixed height. Your 3 point latch is now complete.

#### FOR SINGLE OR DOUBLE DOOR OPERATION

If you do not need the entire kit, you may order only the parts you need.

## Door Rod Assemblies for Three Point Latch Kits



### Application & Design

To be used as the top and bottom latch bars of a Three Point Latch System. The rods work on a cam action. When the handle is turned to the closed position, the rollers move behind the door flange exerting pressure on the door gasket creating a dust tight seal. Door rods available in clear and yellow plated steel—please indicate plating needed when ordering—use a “C” at the end of the Product Number to select Clear Plated. Stainless Steel Door Rods available on request.

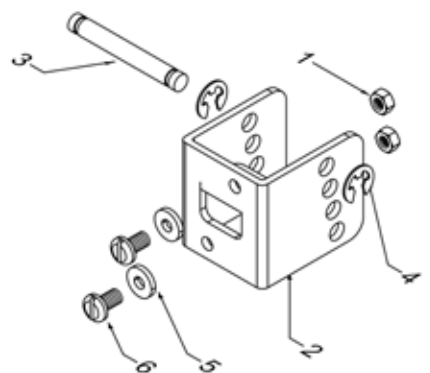
A Three Point Latch Kit requires two (2) Door Rod Assemblies. Note: if entire kit is not needed, you may order individual part numbers shown below.

DOOR ROD KIT WITH ROLLERS		
PRODUCT NO.	“A” DIMENSION	DOOR OPENING
NH-40411	10 3/4"	21 1/4"
NH-40414	13 3/4"	27 1/4"
NH-40417	16 3/4"	33 1/4"
NH-40423	22 3/4"	45 1/4"
NH-40429	28 3/4"	57 1/4"
NH-40431	30 3/4"	61 1/4"
NH-40435	34 3/4"	69 1/4"
NH-40437	36 3/4"	73 1/4"
NH-40440	39 3/4"	79 1/4"
NH-40448	48"	N/A

DOOR ROD WITHOUT ROLLERS		
PRODUCT NO.	“A” DIMENSION	DOOR OPENING
NH-30011-P	10 1/2"	21 1/4"
NH-30011	10 3/4"	21 1/4"
NH-30014-PS	12 1/2"	26 1/4"
NH-30014-P	13 1/2"	27 1/4"
NH-30014	13 3/4"	27 1/4"
NH-30017	16 3/4"	33 1/4"
NH-30023-P	22 1/2"	45 1/4"
NH-30023	22 3/4"	45 1/4"
NH-30029	28 3/4"	57 1/4"
NH-30031	30 3/4"	61 1/4"
NH-30035	34 3/4"	69 1/4"
NH-30037	36 3/4"	73 1/4"
NH-30040	39 3/4"	79 1/4"
NH-30048	48"	N/A

DOOR ROD KIT (ASSEMBLY PRODUCTS)					
PRODUCT NO.	NAME	ITEM NO.	MATERIAL	FINISH	QTY.
FS-635350	ROD ROLLER PIN	2	STEEL	YELLOW PLATED	2
NH-20160	DELFIN® ROLLER	3	1" ROUND AND 1/4" THICK	WHITE	2
FS-235005	PUSH RETAINER	4	STEEL	CLEAR PLATED	2
NH-20506	SHOULDER BOLT	5	STEEL	YELLOW PLATED	1

## Adjustable Door Rod Guides For Three Point Latch Kits



### Application & Design

These rod guides are used in conjunction with Three Point Latch Systems where there is a desire or need for an adjustable rod guide. The rod guide bolts (or welds) to the inside of the enclosure door. The door rods are secured using a Steel roller pin which is adjustable up or down in the rod guide. The latching pressure against the gasket can be varied by moving the roller pin up or down from hole to hole in the rod guide.

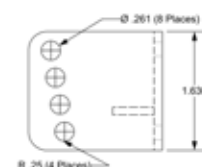
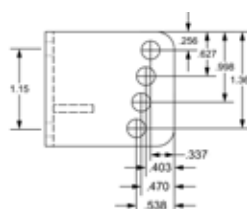
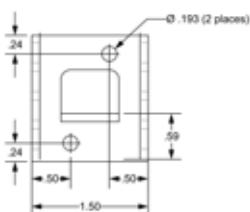
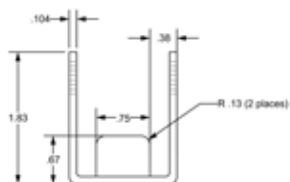
NOTE: Two (2) Rod Guide Assemblies are required for each Three Point Latch Kit. If entire kit is not needed, you may order by individual part numbers shown below.

#### ADJUSTABLE DOOR ROD GUIDE FOR THREE POINT LATCH KIT

PRODUCT NO.	MATERIAL	FINISH
NH-40511	STEEL	YELLOW PLATE
NH-40511C	STEEL	CLEAR PLATE
NH-40512	304 STAINLESS STEEL	BRIGHT

#### ADJUSTABLE DOOR ROD GUIDE FOR THREE POINT LATCH KIT PARTS

PRODUCT NO.	NAME	ITEM NO.	MATERIAL	FINISH	QTY.
FS-203000	HEX NUT	1	10/32 STEEL	YELLOW PLATE	2
FS-203000C	HEX NUT	1	10/32 STEEL	CLEAR PLATE	2
NH-20511	DOOR ROD GUIDE	2	STEEL	YELLOW PLATE	1
NH-20511C	DOOR ROD GUIDE	2	STEEL	CLEAR PLATE	1
FS-635409	PIN	3	1/4" STEEL	YELLOW PLATE	1
FS-635409C	PIN	3	1/4" STEEL	CLEAR PLATE	1
FS-735003	PIN RETAINING RING	4	1/4" STEEL	YELLOW PLATE	2
FS-735003C	PIN RETAINING RING	4	1/4" STEEL	CLEAR PLATE	2
FS-383000	WASHER	5	#10 X .030 SEALING NYLON	CLEAR PLATE	2
FS-133100	SCREW	6	10-32 X 1/2 STEEL	YELLOW PLATE	2
FS-103100	SCREW	6	10-32 X 1/2 STAINLESS STEEL	BRIGHT	2





Fixed Door Rod Guides for Three Point Latch Kits

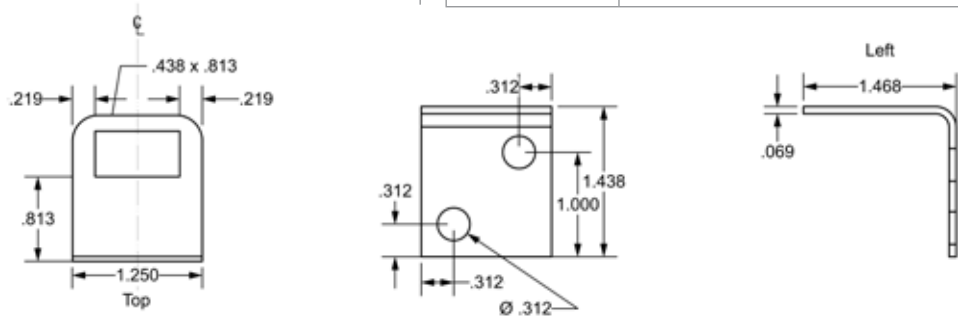


Application & Design

These Rod Guides are used in conjunction with 3 point latching systems where there is no desire or need to adjust spacing. These Rod Guides are designed to be plug welded to door or bolted in place using 1/4 x 1/2 machine screws (screws not furnished).

NOTE: Two (2) Rod Guides are required for each Three Point Latch Kit

PRODUCT NO.	MATERIAL	FINISH
NH-20512	STEEL	UNPLATED
NH-20514	304 STAINLESS STEEL	BRIGHT
NH-20516	316 STAINLESS STEEL	BRIGHT



Door Handles: Vault Type Kit



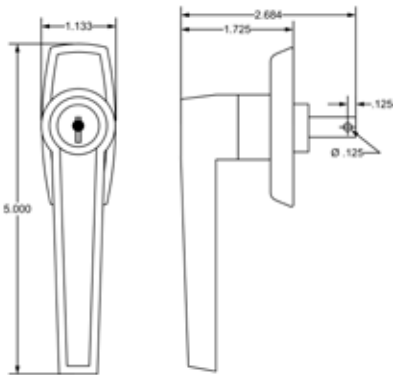
Application & Design

These Vault Type Handles may be used for either single point or Three Point operation. These handles have an internal O-ring and an external escutcheon plate seal which makes them oil tight. Each key locking handle is supplied with two keys and all handles are keyed alike. Handles are die cast zinc. Gaskets are solid neoprene.

KEY LOCKING CLOCKWISE		
PRODUCT NO.	ITEMS INCLUDED	HANDLE FINISH
LH-40502	HANDLE (LH-20502), GASKET NEOPRENE, SCREWS #10 x 3/8 WITH EXTENDED TOOTH LOCKWASHER AND COTTER PIN CLOCKWISE	BRUSHED CHROME.

KEY LOCKING COUNTERCLOCKWISE		
PRODUCT NO.	ITEMS INCLUDED	HANDLE FINISH
LH-40503	HANDLE (LH-20503), GASKET NEOPRENE, SCREWS #10 x 3/8 WITH EXTENDED TOOTH LOCKWASHER AND COTTER PIN COUNTER CLOCKWISE	BRUSHED CHROME.
LH-40503C		BRIGHT CHROME.

NON LOCKING CLOCKWISE		
PRODUCT NO.	ITEMS INCLUDED	HANDLE FINISH
LH-40504	INCLUDED WITH PRODUCT NEOPRENE GASKET-SCREWS #10 X 3/8 W/ EXT. TOOTH LOCKWASHER AND COTTER PIN	BRUSHED CHROME.



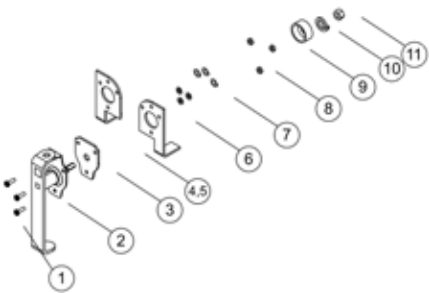
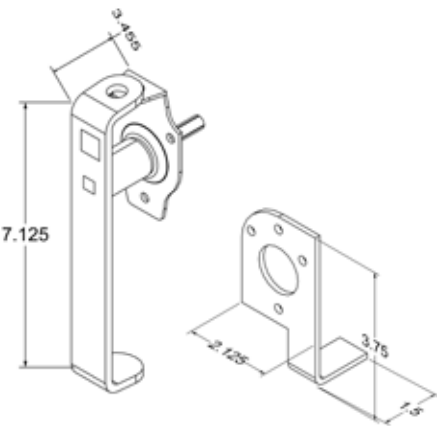
Door Handles: Padlockable at Top Kit



Application & Design

This handle can work in conjunction with either a single point latch or a Three Point latch to provide a means for padlocking the handle. These handles are designed so that they may be used for clockwise or counter clockwise operation. They are also padlockable in either mode. Counter clockwise is available upon request.

If the entire kit is not needed, you may order by individual part numbers shown below.



PADLOCKABLE DOOR HANDLE KIT					
PRODUCT NO.	NAME				
LH-40510	COMPLETE PADLOCKABLE AT TOP DOOR HANDLE KIT				

PADLOCKABLE DOOR HANDLE KIT PARTS					
PRODUCT NO.	NAME	ITEM NO.	MATERIAL	FINISH	QTY.
FS-103120	SCREW (10-32 X 5/8)	1	18-8 STAINLESS STEEL	BRIGHT	3
LH-20510	HANDLE, PADLOCKABLE	2	304 STAINLESS STEEL	BRIGHT	1
LH-10047	GASKET	3	NEOPRENE	BLACK	1
LH-20052	90° CCW STOP PLATE	4	STEEL	YELLOW PLATE	1
LH-20051	90° CW STOP PLATE	5	STEEL	YELLOW PLATE	1
FS-385003	1/4" RETAINING RING	6	PLASTIC	CLEAR	3
FS-30300	#10 LOCK WASHER	7	STAINLESS STEEL	BRIGHT	3
FS-203000	HEX NUT (10-32)	8	STAINLESS STEEL	BRIGHT	3
LH-10053	SPACER	9	DELTRIN® 1/4" THICK	WHITE	1
FS-207000	3/8-16 HEX NUT	10	STAINLESS STEEL	BRIGHT	1
FS-307001	3/8 LOCK WASHER	11	STAINLESS STEEL	BRIGHT	1

## Door Handles: Padlockable at Bottom Kit



### Application & Design

This handle can work in conjunction with either a single point latch or a three point latch to provide a means for padlocking the handle. These handles are designed so that they may be used for clockwise or counter clockwise operation. They are also padlockable in either mode.

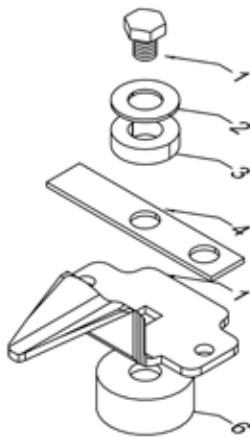
#### PADLOCKABLE DOOR HANDLE KIT

PRODUCT NO.	NAME
LH-40520	COMPLETE PADLOCKABLE AT BOTTOM DOOR HANDLE KIT

#### PADLOCKABLE DOOR HANDLE KIT PARTS

PRODUCT NO.	NAME	MATERIAL	FINISH	QTY.
FS-103120	SCREW (10-32 X 5/8)	18-8 STAINLESS STEEL	BRIGHT	4
FS-203000	HEX NUT (10-32)	STAINLESS STEEL	YELLOW PLATE	4
LH-20056	90° DOOR STOP CW	304 STAINLESS STEEL	BRIGHT	1
LH-20052	90° CCW STOP PLATE	STEEL	YELLOW PLATE	1
FS-106121	HEX BOLT (5/16-18 X 5/8)	STAINLESS STEEL	BRIGHT	2
NH-20503	DOOR CAM	304 STAINLESS STEEL	CLEAR	1
LH-10053	SPACER	DELTRIN® 1/4" THICK	WHITE	1
9-H-73-SSA	PADLOCKABLE HANDLE	STAINLESS STEEL	BRIGHT	1

## Cam Kit for Padlockable Handle Kits: Single Point Latch System



### Application & Design

This Cam Kit operates in conjunction with a single point latch system. These cams are designed so that they may be used for clockwise or counter clockwise operation. Available in Clear Plate upon request—put a “C” at the end of the product number when ordering.

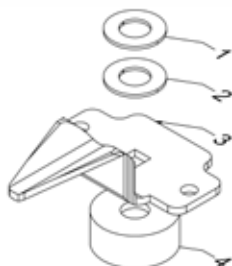
If entire kit is not needed, you may order by individual part numbers.

PRODUCT NO.	DESCRIPTION
LH-40551	CAM KIT FOR SINGLE POINT PADLOCKABLE LATCH SYSTEMS

#### CAM KIT FOR SINGLE POINT PADLOCKABLE LATCH SYSTEM PARTS

PRODUCT NO.	DESCRIPTION	ITEM NO.	MATERIAL	FINISH	QTY.
FS-106071	HEX BOLT (5/16-18 X 3/8)	1	STEEL	YELLOW PLATE	1
FS-338000	SHIM WASHER	2	STEEL (7/16" THICK)	YELLOW PLATE	1
LH-10053	SPACER	3	DELRIN® (1/4" THICK)	WHITE	1
LH-10055	90° STOP PLATE	4	STEEL	YELLOW PLATE	1
NH-20500	CAM	5	STEEL	YELLOW PLATE	1
LH-10054	HANDLE SPACER	6	COUNTERBORED		1

## Cam Kit for Padlockable Handle Kits: Three Point Latch System



### Application & Design

This Cam Kit is designed to operate in conjunction with all key locking and non-locking three-point latch kits. These cams are designed so that they may be used for clockwise or counter clockwise operation. Available in Clear Plate upon request—put a “C” at the end of the product number when ordering.

If entire kit is not needed, you may order by individual part numbers.

PRODUCT NO.	DESCRIPTION
LH-40552	CAM KIT FOR THREE POINT PADLOCKABLE LATCH SYSTEMS

#### CAM KIT FOR THREE POINT PADLOCKABLE LATCH SYSTEM PARTS

PRODUCT NO.	DESCRIPTION	ITEM NO.	MATERIAL	FINISH	QTY.
FS-338000	SHIM WASHER	1	STEEL (7/16" THICK)	YELLOW PLATE	2
FS-338009	SHIM WASHER	2	STEEL (SAE .923 X .467 X .006)	YELLOW PLATE	1
NH-20500	CAM	3	STEEL	YELLOW PLATE	1
LH-10054	HANDLE SPACER	4	DELRIN®	WHITE	2

Large Cam Kits for Three Point Padlockable Latch



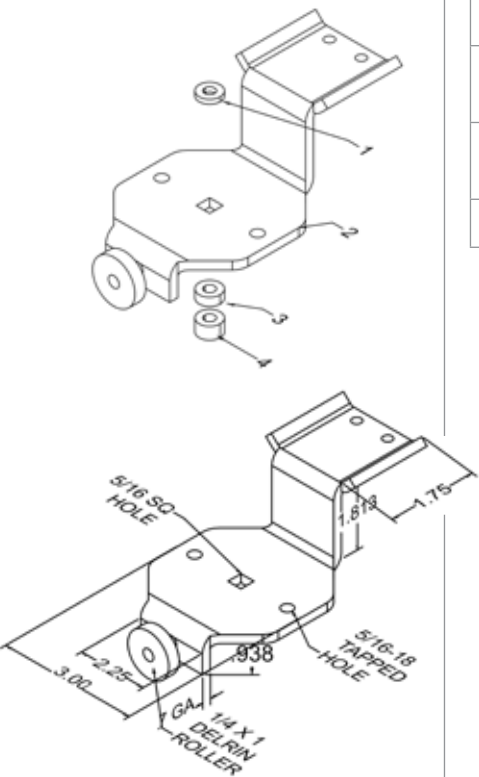
Application & Design

These Heavy Duty Cams are intended for use on large enclosures which are designed for flange mounted disconnect switches or multidoor interlocks. Designed to be used in conjunction with our standard rollertype door latch rods and rod guides. The Cam has a Delrin® roller attached to the rear which rides against the inside of the door assuring smooth operation. Available in Clear Plate upon request—put a “C” at the end of the product number when ordering.

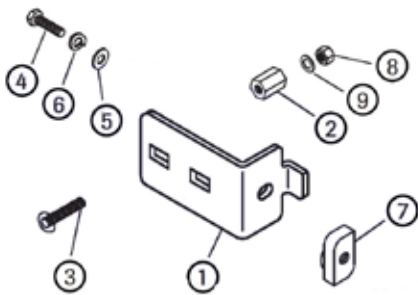
If entire kit is not needed, you may order by individual part numbers

PRODUCT NO.	DESCRIPTION
LH-40553	LARGE CAM KITS FOR THREE POINT PADLOCKABLE LATCH

CAM KIT FOR SINGLE POINT PADLOCKABLE LATCH SYSTEM PARTS					
PRODUCT NO.	NAME	ITEM NO.	MATERIAL	FINISH	QTY.
FS-338000	SHIM WASHER	1	STEEL (7/16" THICK)	YELLOW PLATE	1
NH-20504	LARGE CAM	2	STEEL (7 GAUGE)	YELLOW PLATE	1
LH-10053	SPACER	3	DELIRIN® (1/4" THICK)	WHITE	1
LH-10054	HANDLE SPACER	4	DELIRIN®	WHITE	1



FS Type Panel Mounting Hardware: Bracket Assembly



Application & Design

Interior panels used in electrical enclosures are installed by various means, which range from simple hex nuts with washers to special brackets and hardware. FabTech offers this hardware as individual parts, which can be used for factory installation or as kits, that can be shipped with the panels or enclosures.

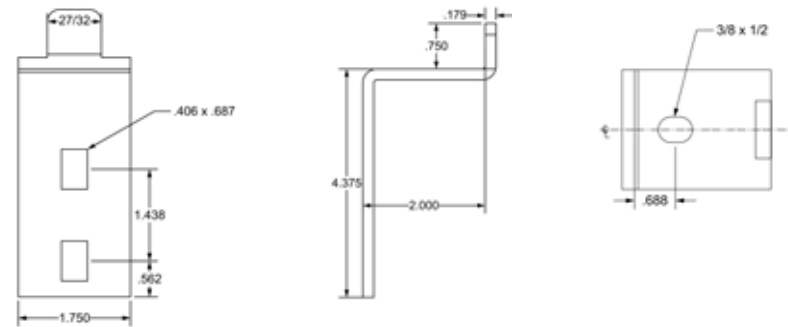
Free-Standing (FS) style enclosures and some consoles use brackets to fasten the interior panels to channel which is welded inside of the enclosures. Single door and double door FS type enclosures, along with consoles, require various combinations of brackets and hardware to mount their respective panels. We offer kits for each of these variations.

NH-20400 serves as the panel support bracket for back panels normally installed in type FS and FSDD enclosures.

Available in Clear Plate, use “C” after Product Number when ordering. Plus, our hardware packs are generically labeled for use without remarking or can be brand labeled if desired.

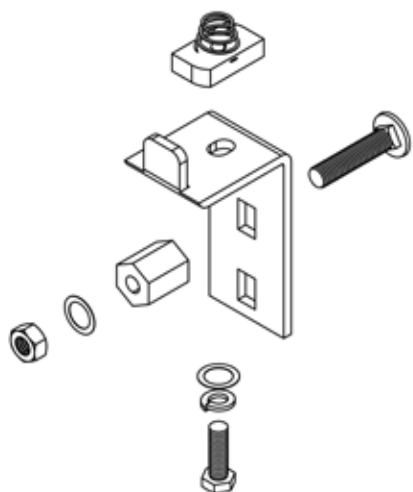
PRODUCT NO.	DESCRIPTION
NH-40300	FREE STANDING PANEL MOUNTING HARDWARE BRACKET ASSEMBLY

FS TYPE PANEL MOUNTING HARDWARE BRACKET ASSEMBLY PARTS					
PRODUCT NO.	DESCRIPTION	ITEM NO.	MATERIAL	FINISH	QTY.
NH-20400	FS PANEL SUPPORT	1	STEEL	YELLOW PLATE	1
NH-20401	FS PANEL SUPPORT STANDOFF	2	STEEL	YELLOW PLATE	1
FS-137358	CARRIAGE BOLT	3	STEEL 3/8-16 X 1.75	YELLOW PLATE	1
FS-136201	HEX HEAD SCREW	4	STEEL 5/16 -18 X 1	YELLOW PLATE	1
FS-33600	FLAT WASHER	5	STEEL 5/16	YELLOW PLATE	1
FS-336001	LOCK WASHER	6	STEEL 5/16	YELLOW PLATE	1
FS-246009	CLAMPING NUT	7	STAINLESS STEEL	BRIGHT	1
FS-23700	HEX NUT	8	STEEL	YELLOW PLATE	1
FS-33700	FLAT WASHER	9	STEEL	YELLOW PLATE	1





## FS Type Panel Mounting Hardware Kits



### FS TYPE PANEL MOUNTING HARDWARE KITS

PRODUCT NO.	DESCRIPTION	FINISH	QTY.
NH-40304	HALF PANEL SINGLE DOOR "FS" HARDWARE KIT ENCLOSURE (PRODUCT NO. NH-40300)	YELLOW PLATE	4
NH-40306	FULL PANEL SINGLE DOOR "FS" HARDWARE KIT ENCLOSURE (PRODUCT NO. NH-40300)	YELLOW PLATE	6

\* USE "C" AT THE END OF THE PRODUCT NUMBER TO INDICATE CLEAR PLATE FINISH.

\*\* THE ABOVE ITEMS ARE PACKAGED IN A #2 KRAFT BAG WITH BUBBLE LINER.

## Side Mounted Panel Hardware Kits



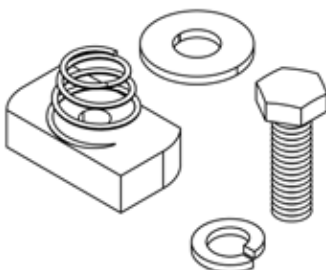
### SIDE MOUNTED PANEL HARDWARE KITS

PRODUCT NO.	DESCRIPTION
NH-40298	"FS" SIDE MOUNTED PANEL HARDWARE KIT

### SIDE MOUNTED PANEL HARDWARE KITS PARTS

PRODUCT NO.	DESCRIPTION	MATERIAL	FINISH	QTY.
FS-136201	HEX HEAD SCREW 5/16-18 x 1	STEEL	YELLOW PLATE	6
FS-336000	FLAT WASHER 5/16	STEEL	YELLOW PLATE	6
FS-336001	LOCK WASHER 5/16	STEEL	YELLOW PLATE	6
FS-246009	CLAMP NUT 5/16	STEEL	CLEAR PLATE ONLY	6

\* USE "C" AT THE END OF THE PRODUCT NUMBER TO INDICATE CLEAR PLATE FINISH.



FSDD Type Panel Mounting Hardware Kits

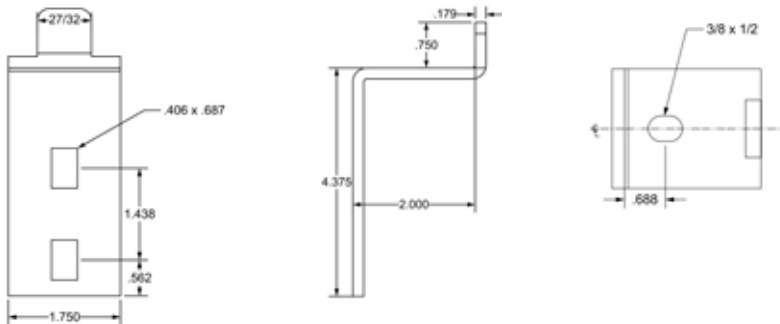


Application & Design

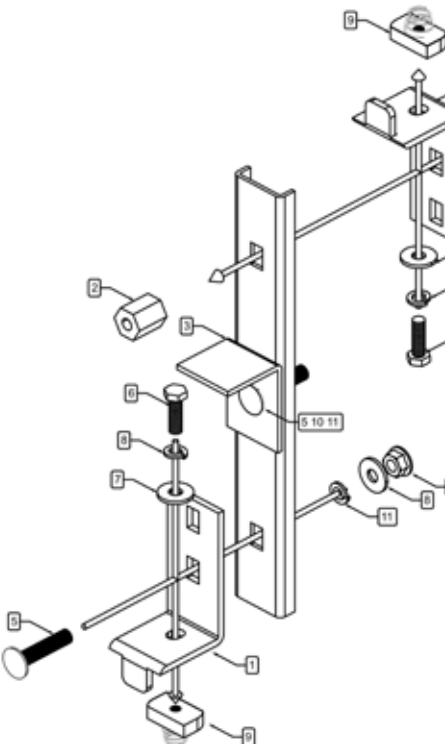
“Free-Standing Double Door” (“FSDD”) style enclosures and some consoles use brackets to fasten the interior panels to channel which is welded inside of the enclosure. We offer kits for each of these variations. Available in Clear Plate, use “C” after Product Number when ordering. Plus, our hardware packs are generically labeled for use without remarking or can be brand labeled if desired.

If entire kit is not needed, you may order by individual part numbers.

FSDD TYPE PANEL MOUNTING HARDWARE KITS			
PRODUCT NO.	DESCRIPTION	FINISH	QTY.
NH-40308	FSDD HALF PANEL ENCLOSURE HARDWARE KIT INCLUDES NH-40304 MOUNTING HARDWARE KIT AND NH-40303 PANEL CENTER SUPPORT HARDWARE KIT	YELLOW PLATE	4
NH-40310	FSDD FULL PANEL ENCLOSURE HARDWARE KIT INCLUDES NH-40306 MOUNTING HARDWARE KIT AND NH-40303 PANEL CENTER SUPPORT HARDWARE KIT	YELLOW PLATE	6



Center Support of FSDD Type Panel Hardware Kits



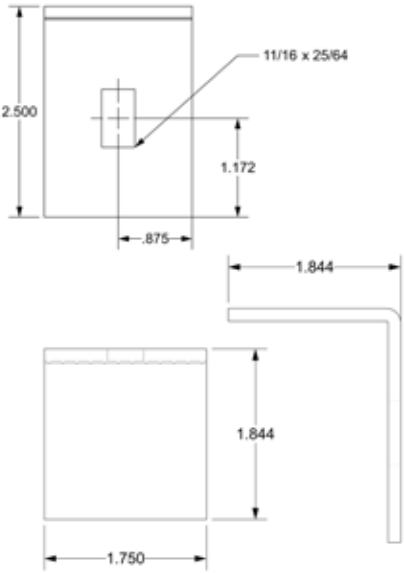
Application & Design

Used with panel bracket to maintain the proper spacing between the panel and the bracket. Cut to length, bored through for 3/8-16 tap and counterbored .578" in rear approximately 1/2" deep. (Note: Center support channel is not included in kit.)

CENTER SUPPORT OF FSDD TYPE PANEL HARDWARE KITS	
PRODUCT NO.	DESCRIPTION
NH-40303	CENTER SUPPORT OF FSDD TYPE PANEL HARDWARE KITS

CENTER SUPPORT OF FSDD TYPE PANEL HARDWARE KIT PARTS					
PRODUCT NO.	DESCRIPTION	ITEM NO.	MATERIAL	FINISH	QTY.
NH-20403	CENTER SUPPORT BRACKET	1	STEEL	YELLOW PLATE	2
NH-20401	FS PANEL SUPPORT STANDOFF	2	STEEL	YELLOW PLATE	2
NH-20405	PANEL BRACKET	3	STEEL	YELLOW PLATE	1
FS-137358	CARRIAGE BOLT	4	STEEL 3/8-16 x 1.75	YELLOW PLATE	2
FS-137158	CARRIAGE BOLT	5	STEEL 3/8-16 x 3/4	YELLOW PLATE	2
FS-136201	HEX HEAD SCREW	6	STEEL 5/16 -18 x 1	YELLOW PLATE	2
FS-33600	FLAT WASHER	7	STEEL 5/16	YELLOW PLATE	2
FS-336001	LOCK WASHER	8	STEEL 5/16	YELLOW PLATE	2
FS-246009	CLAMPING NUT	9	STEEL	CLEAR PLATE	2
FS-23700	HEX NUT	10	STEEL	YELLOW PLATE	2
FS-33700	FLAT WASHER	11	STEEL	YELLOW PLATE	2

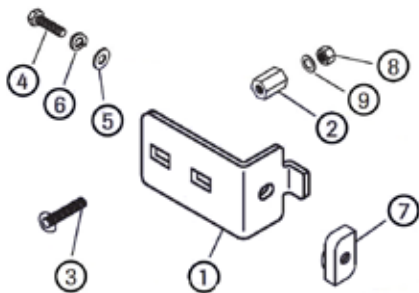
PANEL BRACKET (NH-20405)



FS PANEL SUPPORT STANDOFF



Console Panel Mounting Hardware Kits



Application & Design

Single or Double Door.

If entire kit is not needed, you may order by individual part numbers. Also available in Clear Plate, use “C” after Product Number when ordering.

CONSOLE PANEL HARDWARE KITS	
PRODUCT NO.	DESCRIPTION
NH-40304	CONSOLE WITH HALF PANEL FOR SINGLE OR DOUBLE DOOR HARDWARE KIT
NH-40306	CONSOLE WITH FULL PANEL FOR SINGLE OR DOUBLE DOOR HARDWARE KIT

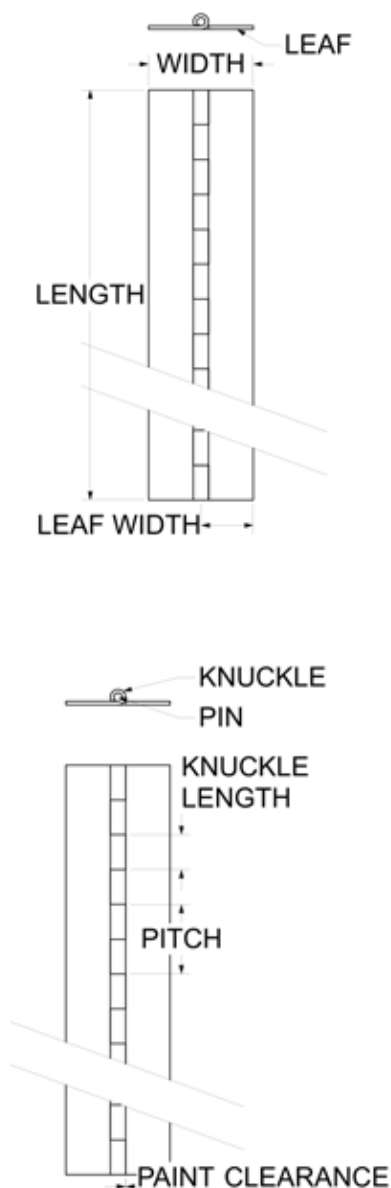
CONSOLE PANEL HARDWARE KIT PARTS				
PRODUCT NO.	DESCRIPTION	MATERIAL	FINISH	QTY.
NH-40300	HALF OR FULL PANEL SUPPORT ASSEMBLY	STEEL	YELLOW PLATE	HALF: 4 FULL: 6
IS-No300	FS PANEL SUPPORT INSTRUCTION SHEET	STEEL	YELLOW PLATE	1

DETAIL OF NH-40300 PANEL SUPPORT ASSEMBLY					
PRODUCT NO.	DESCRIPTION	ITEM NO.	MATERIAL	FINISH	QTY.
NH-20400	FS PANEL SUPPORT	1	STEEL	YELLOW PLATE	1
NH-20401	FS PANEL SUPPORT STANDOFF	2	STEEL	YELLOW PLATE	1
FS-137358	CARRIAGE BOLT	3	STEEL 3/8-16 X 1.75	YELLOW PLATE	1
FS-136201	HEX HEAD SCREW	4	STEEL 5/16 -18 X 1	YELLOW PLATE	1
FS-33600	FLAT WASHER	5	STEEL 5/16	YELLOW PLATE	1
FS-336001	LOCK WASHER	6	STEEL 5/16	YELLOW PLATE	1
FS-246009	CLAMPING NUT	7	STAINLESS STEEL	BRIGHT	1
FS-23700	HEX NUT	8	STEEL	YELLOW PLATE	1
FS-33700	FLAT WASHER	9	STEEL	YELLOW PLATE	1

# HINGES



## Definition of Hinges



### Glossary of Terms

#### LEAF HINGE

**Hinge Length** The length of the leaves measured parallel to the pin.

**Open Hinge Width** Overall dimension measured perpendicular to the pin.

**Leaf** The portion of a hinge extending from the knuckle which revolves around a pin.

**Leaf Width** Measured from the center of the pin to the outer edge of the leaf.

**Knuckle** The circular part of the hinge through which the pin is passed.

#### KNUCKLE HINGE

**Pin** The rod which runs through the knuckle, parallel to the length of the hinge, comprising the pivotal point.

**Knuckle** Knuckle measured parallel to the pin.

**Pitch** The dimension from a point on the knuckle to the same point on an adjacent knuckle on the same leaf.

**End Play** The amount of axial movement between the leaves.

**Paint Clearance** The space dimension from the knuckle edge to the adjacent leaf edge.



Preformed Hinge — NEMA Style



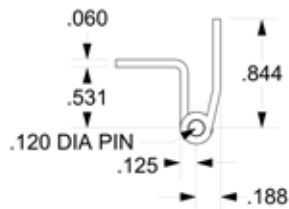
Application & Design

To be used as a door hinge on TYPE 4 and TYPE 12 single, double or multi-door enclosures. The Preformed Hinge as offered by FabTech Supply is designed specifically to be used on the traditional “NEMA” style electrical enclosure. Both the formed and unformed leaves are configured to provide the proper spacing and location for the assembly of the door to the enclosure. The construction of the hinge incorporates .062” paint clearance and the pin is removable. Length can be cut to order.

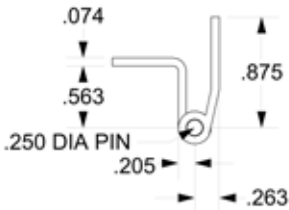
*Note: 316 Stainless Steel available in sizes upon request.*

MEDIUM DUTY HINGE				
PRODUCT NO.	LENGTH	MATERIAL	FINISH	NOTES
HF-611396	96	STEEL	LIGHT COAT OF WATER SOLUBLE EVAPORATING OIL	WITH STAINLESS STEEL PIN
HF-613396	96	304 STAINLESS STEEL	NATURAL	
HF-633396	96	316 STAINLESS STEEL	NATURAL	

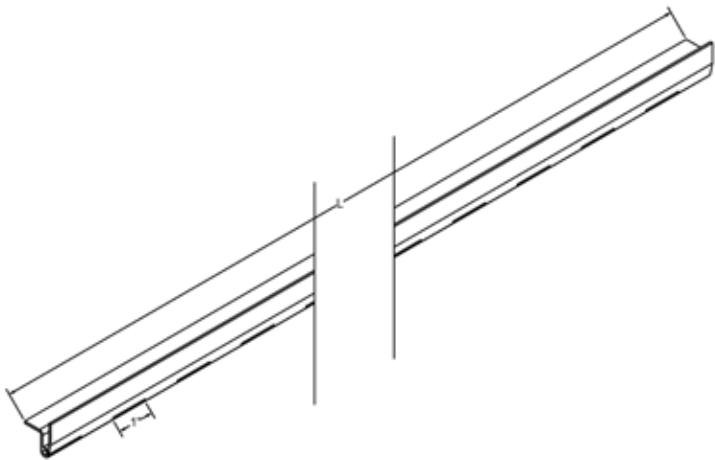
MEDIUM DUTY



HEAVY DUTY



HEAVY DUTY HINGE				
PRODUCT NO.	LENGTH	MATERIAL	FINISH	NOTES
HF-741384	84	STEEL	LIGHT COAT OF WATER SOLUBLE EVAPORATING OIL	
HF-741384S	84	STEEL	LIGHT COAT OF WATER SOLUBLE EVAPORATING OIL	WITH STAINLESS STEEL PIN
HF-743384	84	304 STAINLESS STEEL	NATURAL	
HF-733384	84	316 STAINLESS STEEL	NATURAL	



Specialty Hinges



Application & Design

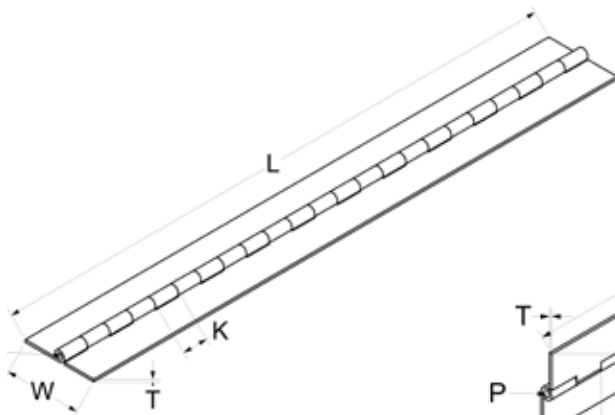
FabTech Supply provides custom hinges for all types of applications. Hinges can be made to specific lengths with punched holes or tapped holes and formed leaves. Length, widths, knuckle length, pin size, pin material can be customized to the customers specific need. All Specialty Hinges not inventoried for a customer require a 4-6 week lead time.  
*Note: 316 Stainless Steel available in sizes upon request.*

CONTINUOUS HINGES — FLAT							
PRODUCT NO.	MATERIAL	LENGTH (L)	WIDTH (W)	THICKNESS (T)	KNUCKLE LENGTH (K)	PIN DIAM-ETER (P)	PIN MATERIAL
HC-500772S	STEEL	72	1.5	.050	.500	.120	304 SS
HC-500972S	STEEL	72	2	.050	.500	.120	304 SS
HC-600796S	STEEL	96	1.5	.060	.500	.120	304 SS
HC-600772S	STEEL	72	2	.060	.500	.120	304 SS
HC-600996S	STEEL	96	2	.060	.500	.120	304 SS
HC-650972S	STEEL	72	2	.060	.625	.188	304 SS

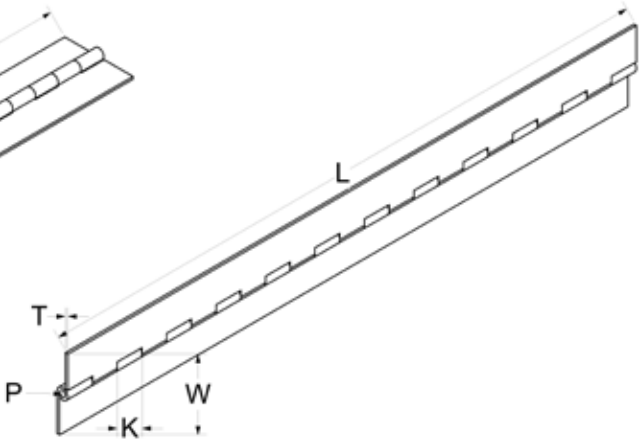
CONTINUOUS HINGE — WITH REVERSED LEAF							
PRODUCT NO.	MATERIAL	LENGTH (L)	WIDTH (W)	THICKNESS (T)	KNUCKLE LENGTH (K)	PIN DIAM-ETER (P)	PIN MATERIAL
HC-602772R	STEEL	72	1.5	.060	.500	.120	304 SS

PERFORMED HINGE							
PRODUCT NO.	MATERIAL	LENGTH (L)	WIDTH (W)	THICKNESS (T)	KNUCKLE LENGTH (K)	PIN DIAM-ETER (P)	PIN MATERIAL
HF-614496	STEEL	96	1.5	.060	.500	.120	304 SS

CONTINUOUS HINGE — FLAT



CONTINUOUS HINGE — WITH REVERSED LEAF

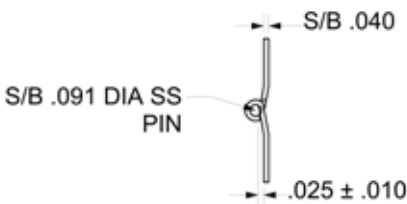


JIC Style Pre-Cut Hinges

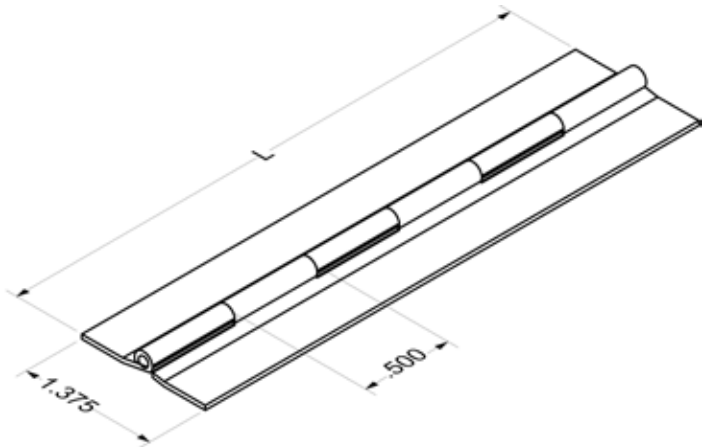


Application & Design

Used on hinged cover "JIC" enclosures to attach the cover to the box. FabTech's Hinges are precut to fit the most popular sizes of "JIC" boxes without further trimming. Our hinge has a formed offset of .025" to prevent the hinge barrel from rubbing the box. They also have .032" paint clearance between the leaf and the barrel to prevent the painted barrel from rubbing the hinge leaf. Cut per order.  
*Note: 316 Stainless Steel available in sizes upon request.*



PRODUCT NO.	LENGTH	MATERIAL	FINISH
JH-20504	3	STEEL	MILL
JH-20524	3	304 STAINLESS STEEL	MILL
JH-20506	5	STEEL	MILL
JH-20526	5	304 STAINLESS STEEL	MILL
JH-20508	7	STEEL	MILL
JH-20528	7	304 STAINLESS STEEL	MILL
JH-20510	9	STEEL	MILL
JH-20530	9	304 STAINLESS STEEL	MILL
JH-20512	11	STEEL	MILL
JH-20532	11	304 STAINLESS STEEL	MILL
JH-20514	13	STEEL	MILL
JH-20534	13	304 STAINLESS STEEL	MILL
JH-20516	15	STEEL	MILL
JH-20536	15	304 STAINLESS STEEL	MILL
HC-400696SO	96	STEEL	MILL
HC-402696SO	96	304 STAINLESS STEEL	BRIGHT



## Continuous Hinges: HC-40 Series

### Application & Design

HC-40 Series Continuous Hinges have a gauge of .040, a pin of .091 and a knuckle of .500.

*Note: 316 Stainless Steel available in sizes upon request.*

PRODUCT NO.	OPEN WIDTH	LENGTH	MATERIAL	FINISH
HC-400372	1.062	72	STEEL	UNFINISHED
HC-402372	1.062	72	304 STAINLESS STEEL	BRIGHT
HC-404372	1.062	72	ALUMINUM	MILL
HC-400396	1.062	96	STEEL	UNFINISHED
HC-402396	1.062	96	304 STAINLESS STEEL	BRIGHT
HC-404396	1.062	96	ALUMINUM	MILL
HC-400572	1.250	72	STEEL	UNFINISHED
HC-402572	1.250	72	304 STAINLESS STEEL	BRIGHT
HC-404572	1.250	72	ALUMINUM	MILL
HC-400596	1.250	96	STEEL	UNFINISHED
HC-402596	1.250	96	304 STAINLESS STEEL	BRIGHT
HC-404596	1.250	96	ALUMINUM	MILL
HC-400772	1.500	72	STEEL	UNFINISHED
HC-402772	1.500	72	304 STAINLESS STEEL	BRIGHT
HC-404772	1.500	72	ALUMINUM	MILL

PRODUCT NO.	OPEN WIDTH	LENGTH	MATERIAL	FINISH
HC-400796	1.500	96	STEEL	UNFINISHED
HC-402796	1.500	96	304 STAINLESS STEEL	BRIGHT
HC-404796	1.500	96	ALUMINUM	MILL
HC-400872	1.750	72	STEEL	UNFINISHED
HC-402872	1.750	72	304 STAINLESS STEEL	BRIGHT
HC-404872	1.750	72	ALUMINUM	MILL
HC-400896	1.750	96	STEEL	UNFINISHED
HC-402896	1.750	96	304 STAINLESS STEEL	BRIGHT
HC-404896	1.750	96	ALUMINUM	MILL
HC-400972	2.000	72	STEEL	UNFINISHED
HC-402972	2.000	72	304 STAINLESS STEEL	BRIGHT
HC-404972	2.000	72	ALUMINUM	MILL
HC-400996	2.000	96	STEEL	UNFINISHED
HC-402996	2.000	96	304 STAINLESS STEEL	BRIGHT
HC-404996	2.000	96	ALUMINUM	MILL

## Continuous Hinges: HC-50 Series

### Application & Design

HC-50 Series Continuous Hinges have a gauge of .050, a pin of .120 and a knuckle of .500.

*Note: 316 Stainless Steel available in sizes upon request.*

PRODUCT NO.	OPEN WIDTH	LENGTH	MATERIAL	FINISH
HC-500372	1.062	72	STEEL	UNFINISHED
HC-502372	1.062	72	304 STAINLESS STEEL	BRIGHT
HC-504372	1.062	72	ALUMINUM	MILL
HC-500396	1.062	96	STEEL	UNFINISHED
HC-502396	1.062	96	304 STAINLESS STEEL	BRIGHT
HC-504396	1.062	96	ALUMINUM	MILL
HC-500572	1.250	72	STEEL	UNFINISHED
HC-502572	1.250	72	304 STAINLESS STEEL	BRIGHT
HC-504572	1.250	72	ALUMINUM	MILL
HC-500596	1.250	96	STEEL	UNFINISHED
HC-502596	1.250	96	304 STAINLESS STEEL	BRIGHT
HC-504596	1.250	96	ALUMINUM	MILL
HC-500772	1.500	72	STEEL	UNFINISHED
HC-502772	1.500	72	304 STAINLESS STEEL	BRIGHT
HC-504772	1.500	72	ALUMINUM	MILL
HC-506772	1.500	72	316 STAINLESS STEEL	BRIGHT
HC-500796	1.500	96	STEEL	UNFINISHED
HC-502796	1.500	96	304 STAINLESS STEEL	BRIGHT
HC-504796	1.500	96	ALUMINUM	MILL
HC-500872	1.750	72	STEEL	UNFINISHED
HC-502872	1.750	72	304 STAINLESS STEEL	BRIGHT
HC-504872	1.750	72	ALUMINUM	MILL
HC-500896	1.750	96	STEEL	UNFINISHED
HC-502896	1.750	96	304 STAINLESS STEEL	BRIGHT
HC-504896	1.750	96	ALUMINUM	MILL
HC-500972	2.000	72	STEEL	UNFINISHED
HC-502972	2.000	72	304 STAINLESS STEEL	BRIGHT
HC-504972	2.000	72	ALUMINUM	MILL
HC-500996	2.000	96	STEEL	UNFINISHED

PRODUCT NO.	OPEN WIDTH	LENGTH	MATERIAL	FINISH
HC-502996	2.000	96	304 STAINLESS STEEL	BRIGHT
HC-504996	2.000	96	ALUMINUM	MILL
HC-501172	2.500	72	STEEL	UNFINISHED
HC-503172	2.500	72	304 STAINLESS STEEL	BRIGHT
HC-505172	2.500	72	ALUMINUM	MILL
HC-501196	2.500	96	STEEL	UNFINISHED
HC-503196	2.500	96	304 STAINLESS STEEL	BRIGHT
HC-505196	2.500	96	ALUMINUM	MILL
HC-501372	3.000	72	STEEL	UNFINISHED
HC-503372	3.000	72	304 STAINLESS STEEL	BRIGHT
HC-505372	3.000	72	ALUMINUM	MILL
HC-501396	3.000	96	STEEL	UNFINISHED
HC-503396	3.000	96	304 STAINLESS STEEL	BRIGHT
HC-505396	3.000	96	ALUMINUM	MILL
HC-501572	3.500	72	STEEL	UNFINISHED
HC-503572	3.500	72	304 STAINLESS STEEL	BRIGHT
HC-505572	3.500	72	ALUMINUM	MILL
HC-501596	3.500	96	STEEL	UNFINISHED
HC-503596	3.500	96	304 STAINLESS STEEL	BRIGHT
HC-505596	3.500	96	ALUMINUM	MILL
HC-501772	4.000	72	STEEL	UNFINISHED
HC-503772	4.000	72	304 STAINLESS STEEL	BRIGHT
HC-505772	4.000	72	ALUMINUM	MILL
HC-501796	4.000	96	STEEL	UNFINISHED
HC-503796	4.000	96	304 STAINLESS STEEL	BRIGHT
HC-505796	4.000	96	ALUMINUM	MILL

## Continuous Hinges: HC-60 Series

### Application & Design

HC-60 Series Continuous Hinges have a gauge of .060, a pin of .120 and a knuckle of .500.

*Note: 316 Stainless Steel available in sizes upon request.*

PRODUCT NO.	OPEN WIDTH	LENGTH	MATERIAL	FINISH
HC-600372	1.062	72	STEEL	UNFINISHED
HC-602372	1.062	72	304 STAINLESS STEEL	BRIGHT
HC-604372	1.062	72	ALUMINUM	MILL
HC-600396	1.062	96	STEEL	UNFINISHED
HC-602396	1.062	96	304 STAINLESS STEEL	BRIGHT
HC-604396	1.062	96	ALUMINUM	MILL
HC-600572	1.250	72	STEEL	UNFINISHED
HC-602572	1.250	72	304 STAINLESS STEEL	BRIGHT
HC-604572	1.250	72	ALUMINUM	MILL
HC-600596	1.250	96	STEEL	UNFINISHED
HC-602596	1.250	96	304 STAINLESS STEEL	BRIGHT
HC-604596	1.250	96	ALUMINUM	MILL
HC-600772	1.500	72	STEEL	UNFINISHED
HC-602772	1.500	72	304 STAINLESS STEEL	BRIGHT
HC-604772	1.500	72	ALUMINUM	MILL
HC-600796	1.500	96	STEEL	UNFINISHED
HC-602796	1.500	96	304 STAINLESS STEEL	BRIGHT
HC-604796	1.500	96	ALUMINUM	MILL
HC-600872	1.750	72	STEEL	UNFINISHED
HC-602872	1.750	72	304 STAINLESS STEEL	BRIGHT
HC-604872	1.750	72	ALUMINUM	MILL
HC-600896	1.750	96	STEEL	UNFINISHED
HC-602896	1.750	96	304 STAINLESS STEEL	BRIGHT
HC-604896	1.750	96	ALUMINUM	MILL
HC-600972	2.000	72	STEEL	UNFINISHED
HC-602972	2.000	72	304 STAINLESS STEEL	BRIGHT
HC-604972	2.000	72	ALUMINUM	MILL
HC-606972	2.000	72	316 STAINLESS STEEL	BRIGHT

PRODUCT NO.	OPEN WIDTH	LENGTH	MATERIAL	FINISH
HC-600996	2.000	96	STEEL	UNFINISHED
HC-602996	2.000	96	304 STAINLESS STEEL	BRIGHT
HC-604996	2.000	96	ALUMINUM	MILL
HC-601172	2.500	72	STEEL	UNFINISHED
HC-603172	2.500	72	304 STAINLESS STEEL	BRIGHT
HC-605172	2.500	72	ALUMINUM	MILL
HC-601196	2.500	96	STEEL	UNFINISHED
HC-603196	2.500	96	304 STAINLESS STEEL	BRIGHT
HC-604196	2.500	96	316 STAINLESS STEEL	BRIGHT
HC-605196	2.500	96	ALUMINUM	MILL
HC-601372	3.000	72	STEEL	UNFINISHED
HC-603372	3.000	72	304 STAINLESS STEEL	BRIGHT
HC-605372	3.000	72	ALUMINUM	MILL
HC-601396	3.000	96	STEEL	UNFINISHED
HC-603396	3.000	96	304 STAINLESS STEEL	BRIGHT
HC-605396	3.000	96	ALUMINUM	MILL
HC-601572	3.500	72	STEEL	UNFINISHED
HC-603572	3.500	72	304 STAINLESS STEEL	BRIGHT
HC-605572	3.500	72	ALUMINUM	MILL
HC-601596	3.500	96	STEEL	UNFINISHED
HC-603596	3.500	96	304 STAINLESS STEEL	BRIGHT
HC-605596	3.500	96	ALUMINUM	MILL
HC-601772	4.000	72	STEEL	UNFINISHED
HC-603772	4.000	72	304 STAINLESS STEEL	BRIGHT
HC-605772	4.000	72	ALUMINUM	MILL
HC-601796	4.000	96	STEEL	UNFINISHED
HC-603796	4.000	96	304 STAINLESS STEEL	BRIGHT
HC-605796	4.000	96	ALUMINUM	MILL



## Continuous Hinges: HC-61 Series

### Application & Design

HC-61 Series Continuous Hinges have a gauge of .061, a pin of .120 and a knuckle of 1.000.

*Note: 316 Stainless Steel available in sizes upon request.*

PRODUCT NO.	OPEN WIDTH	LENGTH	MATERIAL	FINISH
HC-612372	1.062	72	304 STAINLESS STEEL	BRIGHT
HC-614372	1.062	72	ALUMINUM	MILL
HC-612396	1.062	96	304 STAINLESS STEEL	BRIGHT
HC-614396	1.062	96	ALUMINUM	MILL
HC-610572	1.250	72	STEEL	UNFINISHED
HC-612572	1.250	72	304 STAINLESS STEEL	BRIGHT
HC-614572	1.250	72	ALUMINUM	MILL
HC-610596	1.250	96	STEEL	UNFINISHED
HC-612596	1.250	96	304 STAINLESS STEEL	BRIGHT
HC-614596	1.250	96	ALUMINUM	MILL
HC-610772	1.500	72	STEEL	UNFINISHED
HC-612772	1.500	72	304 STAINLESS STEEL	BRIGHT
HC-614772	1.500	72	ALUMINUM	MILL
HC-610796	1.500	96	STEEL	UNFINISHED
HC-612796	1.500	96	304 STAINLESS STEEL	BRIGHT
HC-614796	1.500	96	ALUMINUM	MILL
HC-610872	1.750	72	STEEL	UNFINISHED
HC-612872	1.750	72	304 STAINLESS STEEL	BRIGHT
HC-614872	1.750	72	ALUMINUM	MILL
HC-610896	1.750	96	STEEL	UNFINISHED
HC-612896	1.750	96	304 STAINLESS STEEL	BRIGHT
HC-614896	1.750	96	ALUMINUM	MILL
HC-610972	2.000	72	STEEL	UNFINISHED
HC-612972	2.000	72	304 STAINLESS STEEL	BRIGHT
HC-614972	2.000	72	ALUMINUM	MILL
HC-610996	2.000	96	STEEL	UNFINISHED
HC-612996	2.000	96	304 STAINLESS STEEL	BRIGHT
HC-614996	2.000	96	ALUMINUM	MILL

PRODUCT NO.	OPEN WIDTH	LENGTH	MATERIAL	FINISH
HC-611172	2.500	72	STEEL	UNFINISHED
HC-613172	2.500	72	304 STAINLESS STEEL	BRIGHT
HC-615172	2.500	72	ALUMINUM	MILL
HC-611196	2.500	96	STEEL	UNFINISHED
HC-613196	2.500	96	304 STAINLESS STEEL	BRIGHT
HC-615196	2.500	96	ALUMINUM	MILL
HC-611372	3.000	72	STEEL	UNFINISHED
HC-613372	3.000	72	304 STAINLESS STEEL	BRIGHT
HC-615372	3.000	72	ALUMINUM	MILL
HC-611396	3.000	96	STEEL	UNFINISHED
HC-613396	3.000	96	304 STAINLESS STEEL	BRIGHT
HC-615396	3.000	96	ALUMINUM	MILL
HC-611572	3.500	72	STEEL	UNFINISHED
HC-613572	3.500	72	304 STAINLESS STEEL	BRIGHT
HC-615572	3.500	72	ALUMINUM	MILL
HC-611596	3.500	96	STEEL	UNFINISHED
HC-613596	3.500	96	304 STAINLESS STEEL	BRIGHT
HC-615596	3.500	96	ALUMINUM	MILL
HC-611772	4.000	72	STEEL	UNFINISHED
HC-613772	4.000	72	304 STAINLESS STEEL	BRIGHT
HC-615772	4.000	72	ALUMINUM	MILL
HC-611796	4.000	96	STEEL	UNFINISHED
HC-613796	4.000	96	304 STAINLESS STEEL	BRIGHT
HC-615796	4.000	96	ALUMINUM	MILL

## Continuous Hinges: HC-65 Series

### Application & Design

HC-65 Series Continuous Hinges have a gauge of .060, a pin of .187 (except 316SS which has a .120 pin) and a knuckle of .625.

*Note: 316 Stainless Steel available in sizes upon request.*

PRODUCT NO.	OPEN WIDTH	LENGTH	MATERIAL	FINISH
HC-650772	1.500	72	STEEL	UNFINISHED
HC-652772	1.500	72	304 STAINLESS STEEL	BRIGHT
HC-656772	1.500	72	316 STAINLESS STEEL	BRIGHT
HC-650796	1.500	96	STEEL	UNFINISHED
HC-652796	1.500	96	304 STAINLESS STEEL	BRIGHT
HC-650872	1.750	72	STEEL	UNFINISHED
HC-652872	1.750	72	304 STAINLESS STEEL	BRIGHT
HC-650896	1.750	96	STEEL	UNFINISHED
HC-652896	1.750	96	304 STAINLESS STEEL	BRIGHT
HC-650972	2.000	72	STEEL	UNFINISHED
HC-652972	2.000	72	304 STAINLESS STEEL	BRIGHT
HC-656972	2.000	72	316 STAINLESS STEEL	BRIGHT
HC-650996	2.000	96	STEEL	UNFINISHED
HC-652996	2.000	96	304 STAINLESS STEEL	BRIGHT
HC-651172	2.500	72	STEEL	UNFINISHED
HC-653172	2.500	72	304 STAINLESS STEEL	BRIGHT
HC-657172	2.500	72	316 STAINLESS STEEL	BRIGHT

PRODUCT NO.	OPEN WIDTH	LENGTH	MATERIAL	FINISH
HC-651196	2.500	96	STEEL	UNFINISHED
HC-653196	2.500	96	304 STAINLESS STEEL	BRIGHT
HC-651372	3.000	72	STEEL	UNFINISHED
HC-653372	3.000	72	304 STAINLESS STEEL	BRIGHT
HC-657372	3.000	72	316 STAINLESS STEEL	BRIGHT
HC-651396	3.000	96	STEEL	UNFINISHED
HC-653396	3.000	96	304 STAINLESS STEEL	BRIGHT
HC-651572	3.500	72	STEEL	UNFINISHED
HC-653572	3.500	72	304 STAINLESS STEEL	BRIGHT
HC-651596	3.500	96	STEEL	UNFINISHED
HC-653596	3.500	96	304 STAINLESS STEEL	BRIGHT
HC-651772	4.000	72	STEEL	UNFINISHED
HC-653772	4.000	72	304 STAINLESS STEEL	BRIGHT
HC-651796	4.000	96	STEEL	UNFINISHED
HC-653796	4.000	96	304 STAINLESS STEEL	BRIGHT

## Continuous Hinges: HC-74 Series

### Application & Design

HC-74 Series Continuous Hinges have a gauge of .074, a pin of .250 and a knuckle of 1.000.

*Note: 316 Stainless Steel available in sizes upon request.*

PRODUCT NO.	OPEN WIDTH	LENGTH	MATERIAL	FINISH
HC-740772	1.500	72	STEEL	UNFINISHED
HC-742772	1.500	72	304 STAINLESS STEEL	BRIGHT
HC-740796	1.500	96	STEEL	UNFINISHED
HC-742796	1.500	96	304 STAINLESS STEEL	BRIGHT
HC-740972	2.000	72	STEEL	UNFINISHED
HC-742972	2.000	72	304 STAINLESS STEEL	BRIGHT
HC-746972*	2.000	72	316 STAINLESS STEEL	BRIGHT
HC-740996	2.000	96	STEEL	UNFINISHED
HC-742996	2.000	96	304 STAINLESS STEEL	BRIGHT
HC-741172	2.500	72	STEEL	UNFINISHED
HC-743172	2.500	72	304 STAINLESS STEEL	BRIGHT
HC-747172	2.500	72	316 STAINLESS STEEL	BRIGHT
HC-741196	2.500	96	STEEL	UNFINISHED
HC-743196	2.500	96	304 STAINLESS STEEL	BRIGHT

PRODUCT NO.	OPEN WIDTH	LENGTH	MATERIAL	FINISH
HC-741372	3.000	72	STEEL	UNFINISHED
HC-743372	3.000	72	304 STAINLESS STEEL	BRIGHT
HC-741396	3.000	96	STEEL	UNFINISHED
HC-743396	3.000	96	304 STAINLESS STEEL	BRIGHT
HC-741572	3.500	72	STEEL	UNFINISHED
HC-743572	3.500	72	304 STAINLESS STEEL	BRIGHT
HC-741596	3.500	96	STEEL	UNFINISHED
HC-743596	3.500	96	304 STAINLESS STEEL	BRIGHT
HC-741772	4.000	72	STEEL	UNFINISHED
HC-743772	4.000	72	304 STAINLESS STEEL	BRIGHT
HC-741796	4.000	96	STEEL	UNFINISHED
HC-743796	4.000	96	304 STAINLESS STEEL	BRIGHT

# MISCELLANEOUS HARDWARE



## Inner Panels (Deadfronts)

### Application & Design

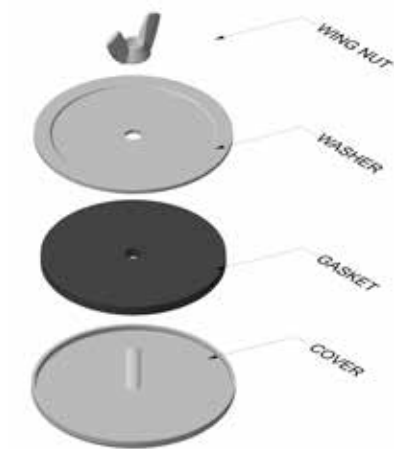
FabTech Supply can make customized Inner Panels or Deadfronts for all enclosures. These Inner Panels are used for mounting gauges, switches, pushbuttons, inside enclosures so that they are available to an operator but will also protect the operator from possible harm. They also allow the enclosure to be closed when not in use, protecting the instruments against many types of harsh environmental conditions.

The Inner Panels can be made as single fixed panel or hinged for easy access to the wiring in the enclosure. Fixed Panels can be attached directly to panel mounting studs and riser kits can provide additional clearance from the back panel. The Hinged Deadfront is attached directly to the panel mounting studs, which provide exact alignment with the back panel. The hinged door can be held in the closed position by winged 1/4 turn fasteners or other locking mechanisms.

These Inner panels can be made in any quantity and to fit the exact dimensions of the enclosure.

Please call for more details and to obtain a quote on this product.

## Oil Tight Hole Seals



### Application & Design

FabTech Hole Seals are used to seal unused push button holes, conduit and knockout holes and other openings of irregular shapes and size against dust, dirt, water and oil. They will cover holes ranging in sizes from .19" through 4.00", and can be used on enclosures having a wall thickness up to .31".

An Oil Tight Hole Seal has a cover with a 1/16" flange formed around the perimeter and a #10 x 5/8 stud welded in the center. A gasket is placed over the stud and these two parts are usually positioned on the outside of the enclosure. A backplate and wing nut are fastened to the Seal from the inside of the enclosure. As the wing nut is tightened, the cover compresses the gasket and seals the hole.

The Oil Tight Hole Seals are constructed with #10-32 x 5/8 zinc plated Steel studs or stainless Steel studs. The wing nuts for the stainless Steel covers are 18-8 stainless Steel and A-36 Steel for the Steel covers. All gaskets are oil resistant closed cell neoprene.

The finishes for the Steel hole seal covers are painted ASA-61 gray over a zinc coated surface. Backplates are unpainted galvanized Steel. The stainless Steel hole seal covers are polished #3 finish with 304 stainless Steel backplates with #2B finish. The Steel wing nuts are yellow plated. Special colors are available.

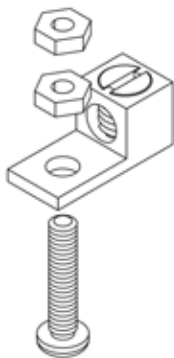
#### STEEL OIL TIGHT HOLE SEALS

PRODUCT NO.	SIZE	MAXIMUM HOLE DIAMETER	HOLE SEAL DIAMETER
NH-45101	MINIATURE OIL-TIGHT PUSH BUTTON HOLES	0.88"	1.22"
NH-45102	1/2" CONDUIT HOLES	0.88"	1.38"
NH-45103	3/4" CONDUIT HOLES	1.06"	1.56"
NH-45104	STANDARD OIL-TIGHT PUSH BUTTON HOLES	1.25"	1.75"
NH-45105	1" CONDUIT HOLES	1.38"	1.88"
NH-45106	1 1/4" CONDUIT HOLES	1.69"	2.19"
NH-45107	1 1/2" CONDUIT HOLES	2.00"	2.50"
NH-45108	2" CONDUIT HOLES	2.50"	3.00"
NH-45109	2 1/2" CONDUIT HOLES	3.00"	3.50"
NH-45110	3" CONDUIT HOLES	3.62"	4.12"
NH-45111	3 1/2" CONDUIT HOLES	4.12"	4.62"
NH-45112	4" CONDUIT HOLES	4.62"	5.12"

#### STAINLESS STEEL OIL TIGHT HOLE SEALS

PRODUCT NO.	SIZE	MAXIMUM HOLE DIAMETER	HOLE SEAL DIAMETER
NH-45113	MINIATURE OIL-TIGHT PUSH BUTTON HOLES	0.88"	1.22"
NH-45114	1/2" CONDUIT HOLES	0.88"	1.38"
NH-45115	3/4" CONDUIT HOLES	1.06"	1.56"
NH-45116	STANDARD OIL-TIGHT PUSH BUTTON HOLES	1.25"	1.75"
NH-45117	1" CONDUIT HOLES	1.38"	1.88"
NH-45118	1 1/4" CONDUIT HOLES	1.69"	2.19"
NH-45119	1 1/2" CONDUIT HOLES	2.00"	2.50"
NH-45120	2" CONDUIT HOLES	2.50"	3.00"
NH-45121	2.5" CONDUIT HOLES	3.00"	3.50"
NH-45122	3" CONDUIT HOLES	3.50"	4.125"
NH-45123	3.5" CONDUIT HOLES	4.00"	4.625"
NH-45124	4" CONDUIT HOLES	4.50"	5.125"

Grounding Kits: NEMA



Application & Design

For installation in large enclosures to ensure positive grounding continuity. Designed to provide a means of attaching a grounding conductor to an enclosure. Copper or aluminum conductors may be used.

PRODUCT NO.	MATERIAL	FINISH
NH-45015	NUTS AND SCREWS: STEEL	CLEAR PLATE
	LUG: 6061-T6 ALUMINUM	ELECTRO TIN PLATED

Grounding Kits: JIC



Application & Design

For use on "JIC" enclosures to ensure a positive ground between the panel, cover and box. Special hardware is furnished which "bites" into the panel surface creating a positive ground when fastening the ground wire to the back panel. Also, a toothed periphery washer is furnished which is to be installed under the screw head of the existing back panel mounting screw. This special washer abrades the panel and the screw at the point of contact, ensuring a very stable ground between the panel and box.

PRODUCT NO.	MATERIAL	FINISH
JH-45015	STEEL	YELLOW PLATE



Wing Turn Draw Latch



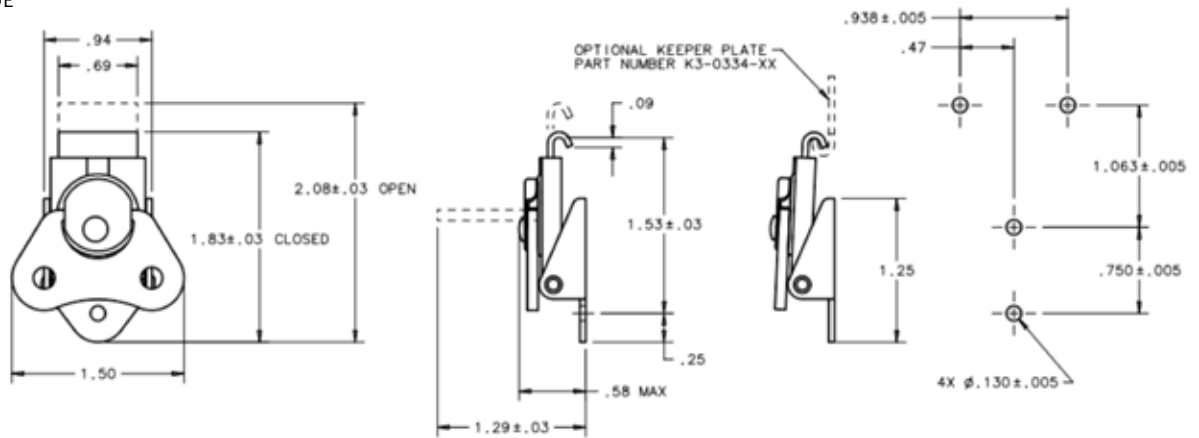
(Dimensional Drawings on pg. 60)

Application & Design

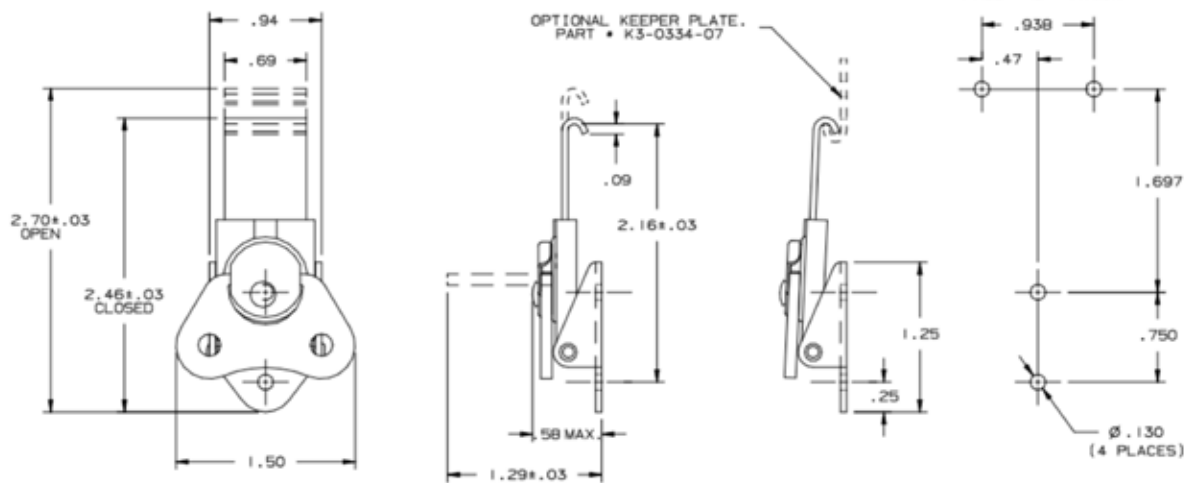
Wing Turn Draw Latch can be used for various enclosure sealing applications where the cover and box are aligned in a manner to achieve an over center camming action with the catch. Wing Turn Draw Latches or “Butterfly” Latches, as they are sometimes called, offer the same latching capabilities as a spring compression latch but use a turning motion to cam the catch in place. In addition, the hinged base accommodates a certain amount of off-plane latching. FabTech offers the Wing Turn Draw Latch most commonly used on “shoe box cover” type enclosures. Also, available is a long slide version which can be used with a special strike to convert "NEMA" 3R enclosures from screws to latches. The catch and strike may be installed using rivets or screws or may be welded into position.

PRODUCT NO.	TYPE	MATERIAL	FINISH
LH-20110	LATCH	302 STAINLESS STEEL	NATURAL
LH-20111	LATCH PADLOCKABLE		
LH-20115	STRIKE		
LH-20119	SPEC STRIKE — WING TURN LARGE SLIDE DRAW LATCH (3R CONV.)		
LH-20120	LONG SLIDE DRAW LATCH		
LH-40110	STRIKE WITH DRAW LATCH		
LH-40111	PADLOCKABLE WITH STRIKE		
LH-40120	LONG SLIDE DRAW LATCH WITH STRIKE		
LH-40121	LARGE SLIDE DRAW LATCH WITH SPEC STRIKE (3R CONV.)		

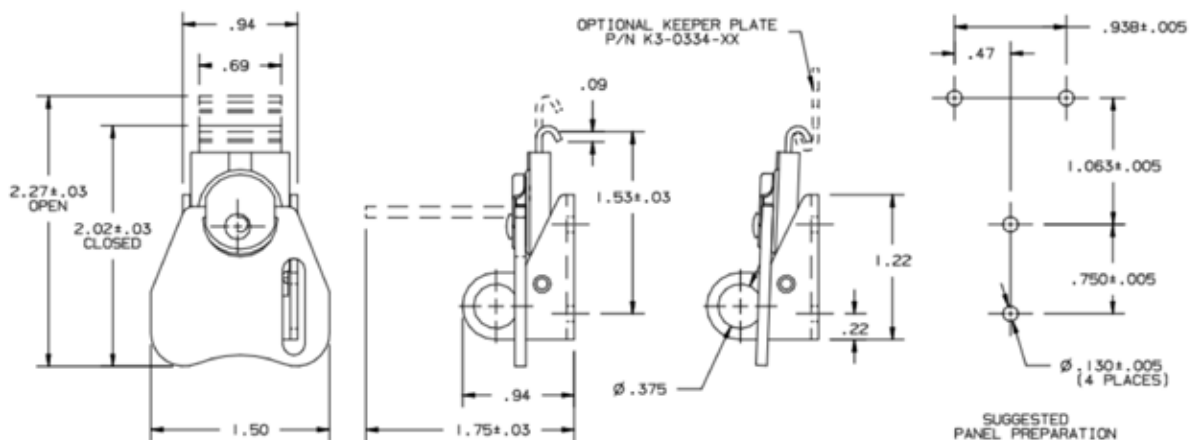
## STANDARD SLIDE



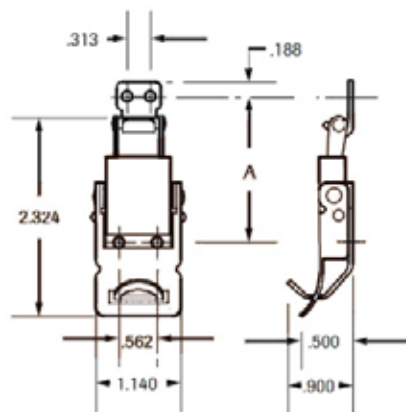
## LONG SLIDE



## PADLOCKABLE



## Compression Spring Catch



### Application & Design

The Compression Spring Catch can be used for various enclosure sealing applications where the cover and box are aligned in a manner to achieve an over center camming action with the catch. The Compression Spring Catch is designed to allow adjustment of the sealing force by varying the spring tension from 30 lbs. to 70 lbs. The sealing force is determined by the location of the strike relative to the Catch (see chart below). The Catch and strike may be installed using screws or may be welded into position. The Catch is available in three designs: Padlockable, with the lifting lever curved upwards; Nonpadlockable with the lifting lever curved upwards; and Nonpadlockable with a flat lifting lever.

#### COMPRESSION SPRING CATCH ASSEMBLY

PRODUCT NO.	DESCRIPTION	MATERIAL	FINISH
LH-40130	WITH STRIKE	302 STAINLESS STEEL	BRIGHT
LH-40131	PADLOCKABLE WITH STRIKE		
LH-40132	FLAT WITH STRIKE		

#### COMPRESSION SPRING CATCH

PRODUCT NO.	DESCRIPTION	MATERIAL	FINISH
LH-20130	LESS STRIKE	302 STAINLESS STEEL	BRIGHT
LH-20131	PADLOCKABLE LESS STRIKE		
LH-20132	FLAT LESS STRIKE		
LH-20125	STRIKE		

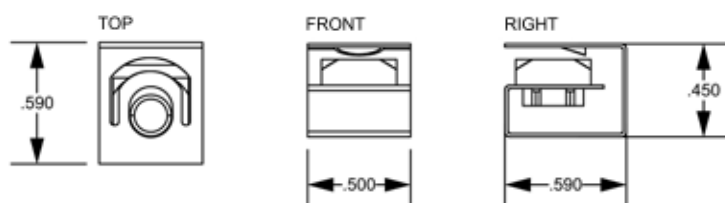
## Clip Nuts for Relay Racks



### Application & Design

The #10-32 Clip Nuts are used with relay rack mounting angles in lieu of tapped holes. Designed to be used in rack angles having .281" diameter holes.

PRODUCT NO.	THREAD	MATERIAL	FINISH	NOTES
NH-45020	10-32	STEEL	CLEAR PLATE	PACKAGE (20)
FS-223008	10-32	STEEL	CLEAR PLATE	



## Shoulder Eye Bolts



### Application & Design

Shoulder Eye Bolts are intended to be installed in large single door, double door and multi door enclosures for the purpose of handling the enclosure. May be used on both TYPE 4 and TYPE 12 enclosures. These Eye Bolts are designed to lift weights up to 5,140 lbs. per bolt. Available in sizes ranging from 1/2" to 3/4".

SHOULDER EYE BOLT			
PRODUCT NO.	THREAD	MATERIAL	FINISH
NH-20410	1/2-13 x 1.50	STEEL	UNCOATED
NH-20412	1/2-13 x 1.50	STEEL	CLEAR PLATE
NH-20414	1/2-13 x 1.50	304 STAINLESS STEEL	MILL
NH-20420	5/8-11 x 1.75	STEEL	UNCOATED
NH-20422	5/8-11 x 1.75	STEEL	CLEAR PLATE
NH-20424	5/8-11 x 1.75	304 STAINLESS STEEL	BRIGHT
NH-20430	3/4-10 x 1.50	STEEL	UNCOATED
NH-20432	3/4-10 x 1.50	STEEL	CLEAR PLATE
NH-20434	3/4-10 x 1.50	304 STAINLESS STEEL	MILL

SHOULDER EYE BOLT NUT			
PRODUCT NO.	THREAD	MATERIAL	FINISH
FS-229000	1/2-13	STEEL	CLEAR PLATE
FS-209000	1/2-13	304 STAINLESS STEEL	BRIGHT
FS-229020	5/8-11	STEEL	CLEAR PLATE
FS-209020	5/8-11	304 STAINLESS STEEL	BRIGHT
FS-229040	3/4-10	STEEL	CLEAR PLATE
FS-209040	3/4-10	304 STAINLESS STEEL	BRIGHT

SHOULDER EYE BOLT WASHER			
PRODUCT NO.	THREAD	MATERIAL	FINISH
FS-329000	1/2	STEEL	CLEAR PLATE
FS-309000	1/2	304 STAINLESS STEEL	BRIGHT
FS-329020	5/8	STEEL	CLEAR PLATE
FS-309020	5/8	304 STAINLESS STEEL	BRIGHT
FS-309040	3/4	304 STAINLESS STEEL	BRIGHT

## Captive Screws



### Application & Design

Captive Screws are required in many cover and door applications. The area above the threads have been relieved to allow the retaining washer to slide freely up and down which captivates the screw.

#### PAN HEAD CAPTIVE SCREW KITS

PRODUCT NO.	THREAD	MATERIAL	FINISH	NOTES
JH-45001	10-32 x 5/8"	STEEL	CLEAR PLATE	WITH RETAINER RING AND FLAT WASHER
JH-45005	10-32 x 5/8"	18-8 STAINLESS STEEL	BRIGHT	WITH RETAINER RING AND FLAT WASHER

#### HEXAGON WASHER HEAD CAPTIVE SCREW KITS

PRODUCT NO.	THREAD	MATERIAL	FINISH	NOTES
NH-45025	1/4-20 x 3/4"	STEEL	YELLOW PLATE	WITH 1/4" RETAINER RING
NH-45030	1/4-20 x 3/4"	18-8 STAINLESS STEEL	BRIGHT	WITH 1/4" RETAINER RING
NH-45026	1/4-28 x 3/4"	STEEL	YELLOW PLATE	WITH 1/4" RETAINER RING
NH-45031	1/4-28 x 3/4"	18-8 STAINLESS STEEL	BRIGHT	WITH 1/4" RETAINER RING

#### PAN HEAD CAPTIVE SCREWS

PRODUCT NO.	THREAD	MATERIAL	FINISH	NOTES
FS-123118	10-32 x 5/8"	STEEL	CLEAR PLATE	SCREW ONLY
FS-103118	10-32 x 9/16"	18-8 STAINLESS STEEL	BRIGHT	SCREW ONLY

#### HEXAGON WASHER HEAD CAPTIVE SCREWS

PRODUCT NO.	THREAD	MATERIAL	FINISH
FS-125158	1/4-20 x 3/4"	STEEL	YELLOW PLATE
FS-105158	1/4-20 x 3/4"	18-8 STAINLESS STEEL	BRIGHT
FS-125158F	1/4-28 x 3/4"	STEEL	YELLOW PLATE
FS-105158F	1/4-28 x 3/4"	18-8 STAINLESS STEEL	BRIGHT

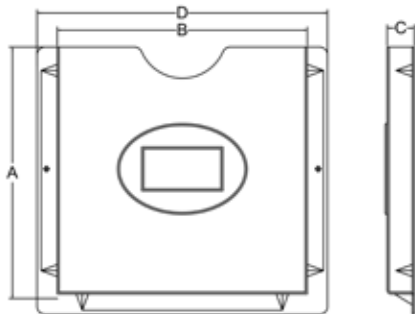
#### RETAINER RING AND WASHER

PRODUCT NO.	TYPE	MATERIAL
FS-383003	RETAINER RING #10	NON-METALLIC
FS-385003	RETAINER RING 1/4	NON-METALLIC
FS-383000	WASHER	NON-METALLIC

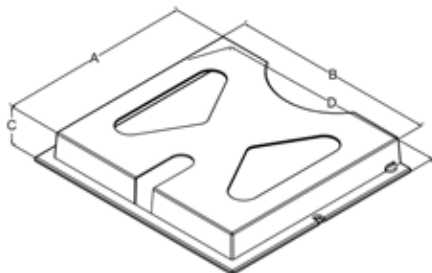
Data Pockets



DATA POCKET WHITE



DATA POCKET GRAY



Application & Design

Data Pockets are used inside of the enclosure to provide space to store wiring diagrams, operation manuals and other pertinent data. Data Pockets can be installed by using double sided tape.

PRODUCT NO.	MEASUREMENTS (A x B x C x D)	COLOR	NOTES
NH-20380	6 x 6 x 1 x 6.94	WHITE	
NH-20381	6 x 6 x 1 x 6.94	WHITE	DOUBLE SIDED TAPE
NH-20385	6 x 6 x 1.25 x 6.94	GRAY	
NH-20386	6 x 6 x 1.25 x 6.94	GRAY	DOUBLE SIDED TAPE
NH-20370	10 x 10 x 1 x 10.75	WHITE	
NH-20371	10 x 10 x 1 x 10.75	WHITE	DOUBLE SIDED TAPE
NH-20375	8.75 x 9.25 x 1.25 x 10.75	GRAY	
NH-20376	8.75 x 9.25 x 1.25 x 10.75	GRAY	DOUBLE SIDED TAPE

DOUBLE SIDED TAPE			
PRODUCT NO.	MATERIAL	QUANTITY	NOTES
GT-10381	DOUBLE SIDED TAPE	SET OF 3	.5 x 7 x .060
GT-10371	DOUBLE SIDED TAPE	SET OF 3	.5 x 3.875 x .060

Gasket for Type 4, 12 and JIC Enclosures



Application & Design

Our Gasket is closed cell neoprene sponge, SCE-41 black. (U indicates listed by UL.) A pressure sensitive adhesive strip is attached to one side. Custom sizes available.

PRODUCT NO.	GASKET SIZE	ROLL LENGTH IN FEET
GA-22125	3/16 x 5/8"	50
GA-22130U	3/16 x 3/4"	50
GA-22140U	3/16 x 1 1/4"	50
GA-22150	1/4 x 1/2"	50
GA-22160U	1/4 x 3/4"	50
GA-22165	1/4 x 1"	50

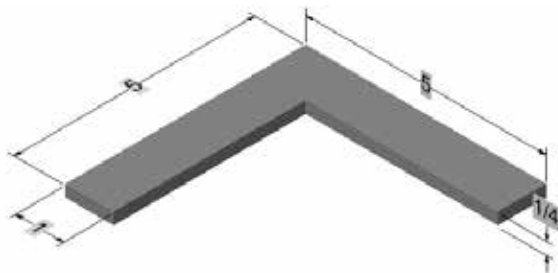
Gasket for Double Door Transition



Application & Design

For use on double door TYPE 12 enclosures to provide a dust tight seal without the use of a center post. The angular design allows one leg to seal from the inside of the door while the other leg transits to the outside in the door trough allowing the opposite door to seal from the outside. This is a popular design for many large double door TYPE 12 enclosures. This part is furnished with no pressure sensitive adhesive.

PRODUCT NO.	MEASUREMENTS
GA-21101	5 x 5 x 1 x 1/4"







PO BOX 23325 JACKSONVILLE FL 32241-3325  
904-367-0095 1-800-393-1116 WWW.FABTECHSUPPLY.COM